

FPS ERRATA PAGES (Errata **highlighted**)

SEC 1 — Pages 3 and 4

SEC 17 — Pages 11 and 12

SEC 26 — Pages 1 through 34

Boilaway test

Sometimes used to describe the GPA weathering test for LP-gas. Refer to definition for "weathering test".

Bottoms

The liquid or residual matter which is withdrawn from the bottom of a fractionator or other vessel during processing or while in storage.

B-P mix

A liquefied hydrocarbon product composed chiefly of butanes and propane. If it originates in a refinery, it may also contain butylenes and propylene. More specifically, it conforms to the GPA specifications for commercial B-P mixes as described in GPA Standard 2140.

Breathing

The movement of vapor in or out of an atmospheric pressure storage tank because of a change of level of the stored liquid, a change in the temperature of the vapor space above the liquid, or a change of atmospheric pressure.

BS&W (basic sediment and water)

Waste that collects in the bottom of vessels and tanks containing petroleum or petroleum products.

Bubble point

The temperature at a specified pressure at which the first stable vapor forms above a liquid.

Butane, commercial

A liquefied hydrocarbon consisting predominately of butane and/or butylene and which conforms to the GPA specification for commercial butane defined in GPA Standard 2140.

Butane, normal

In commercial transactions, a product meeting the GPA specifications for commercial butane and, in addition, containing a minimum of 95 liquid volume percent normal butane. Chemically, normal butane is an aliphatic compound of the paraffin series having the chemical formula C_4H_{10} and having all of its carbon atoms joined in a straight chain.

Calorimeter

An apparatus which is used to determine the heating value of a combustible material.

Carbonyl sulfide

A chemical compound of the aldehyde group containing a carbonyl group and sulfur (COS). Sometimes a contaminant in natural gas and NGL. It may need to be removed in order to meet sulfur specifications.

Casinghead gas

Unprocessed natural gas produced from a reservoir containing oil. It contains heavier hydrocarbon vapors and is usually produced under low pressure from a casing head on the well.

Charcoal test

A test standardized by the Gas Processors Association and the American Gas Association for determining the natural gasoline content of a given natural gas. The gasoline is adsorbed from the gas on activated charcoal and then recovered by distillation. The test is prescribed in Testing Code 101-43, a joint publication of AGA and GPA.

Chromatography

A technique for separating a mixture into individual components by repeated adsorption and desorption on a confined solid bed. It is used for analysis of natural gas and NGL.

Claus process

A process to convert hydrogen sulfide into elemental sulfur by selective oxidation.

Compressibility factor

A factor, usually expressed as "Z," which gives the ratio of the actual volume of gas at a given temperature and pressure to the volume of gas when calculated by the ideal gas law.

Compression ratio

The ratio of the absolute discharge pressure from a compressor to the absolute intake pressure. Also applies to one cylinder of a reciprocating compressor and one or more stages of a rotating compressor.

Condensate

The liquid formed by the condensation of a vapor or gas; specifically, the hydrocarbon liquid separated from natural gas because of changes in temperature and pressure when the gas from the reservoir was delivered to the surface separators. In a steam system it may be water that is condensed and returned to the boilers.

Convergence pressure

The pressure at a given temperature for a hydrocarbon system of fixed composition at which the vapor-liquid equilibrium K-values of the various components in the system become, or tend to become, unity. The convergence pressure is used to adjust vapor-liquid equilibrium K-values to the particular system under consideration. (See TP-22)

Copper strip test

A test using a small strip of pure copper to determine qualitatively the hydrogen sulfide corrosivity of a product. Refer to GPA LP-gas copper strip test (Copper Strip Method), ASTM D-1838 test procedure.

Cricondenbar

The highest pressure at which liquid and vapor phases can exist at equilibrium in a multicomponent system.

Cricodentherm

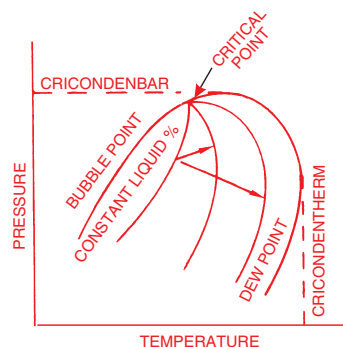
The highest temperature at which liquid and vapor phases can exist at equilibrium in a multicomponent system.

Critical density

The density of a substance at its critical temperature and critical pressure.

Critical pressure

The vapor pressure of a substance at its critical temperature.



Critical temperature

For a pure component, the maximum temperature at which the component can exist as a liquid.

Cryogenic plant

A gas processing plant which is capable of producing natural gas liquid products, including ethane, at very low operating temperatures, usually below minus 50 °F.

Cubic meter

A unit of volume measurement commonly used in international commerce for petroleum, petroleum products and natural gas. One cubic meter measured at 60 °F = 264.172 U.S. gallons = 6.29 barrels = 35.315 cubic feet measured at 60 °F.

Deaerator

An item of equipment used for removing air or other non-condensable gases from a process stream or from steam condensate or boiler feed water.

Debutanizer

A fractionator designed to separate butane (and more volatile components if present) from a hydrocarbon mixture.

Dehydration

The act or process of removing water from gases or liquids.

Demethanized product

A product from which essentially all methane and lighter materials have been removed.

Demethanizer

A fractionator designed to separate methane (and more volatile components if present) from a hydrocarbon mixture.

Depropanizer

A fractionator designed to separate propane (and more volatile components if present) from a hydrocarbon mixture.

Desiccant

A substance used in a dehydrator to remove water and moisture. Also a material used to remove moisture from the air.

Desulfurization

A process by which sulfur and sulfur compounds are removed from gases or liquid hydrocarbon mixtures.

Dew point

The temperature at any given pressure, or the pressure at any given temperature, at which liquid initially condenses from a gas or vapor. It is specifically applied to the temperature at which water vapor starts to condense from a gas mixture (water dew point), or at which hydrocarbons start to condense (hydrocarbon dew point).

Distillation

The process of separating materials by successively heating to vaporize a portion and then cooling to liquefy a part of the vapor. Materials to be separated must differ in boiling point and/or relative volatility.

Doctor test

A qualitative method for detecting hydrogen sulfide and mercaptans in NGL. The test distinguishes between "sour" and "sweet" products.

Dry gas

(1) Gas whose water content has been reduced by a dehydration process. (2) Gas containing little or no hydrocarbons commercially recoverable as liquid product. Gas in this second definition preferably should be called lean gas.

End point

The maximum temperature observed on the thermometer during an ASTM distillation test.

EP-mix (ethane-propane mix)

A product consisting of a mixture of essentially ethane and propane.

Expansion turbine

A device which converts part of the energy content of a gas or liquid stream into mechanical work by expanding the gas or liquid through a turbine from which work is extracted.

Extraction

The process of transferring one or more components from one liquid phase to another by virtue of different solubility in the two liquids. It is also used to indicate removal of one or more constituents from a stream.

Field separator

A vessel in the oil or gas field for separating gas, hydrocarbon liquid, and water from each other.

Flash point

The lowest temperature at which vapors from a hydrocarbon liquid will ignite. See ASTM D-56.

Fractionation

See definition of "distillation." Generally used to describe separation of a mixture of hydrocarbons into individual products based on difference in boiling point and/or relative volatility.

Freeze valve

A specially constructed and calibrated valve designed and used solely for determining the water content in propane product. See ASTM D-2713.

Gas constant (R)

The constant multiplier in the Ideal Gas Law. Numerically, $R=PV/T$, if V is the volume of one mole of an ideal gas at temperature T and pressure P.

Gas hydrate

Refer to definition of "hydrate".

Gas injection

The injection of natural gas into a reservoir to maintain or increase the reservoir pressure or reduce the rate of decline of the reservoir pressure.

Gas lift

A method for bringing crude oil or water to the surface by injecting gas into the producing well bore.

Gas-oil ratio (GOR)

The ratio of gas to liquid hydrocarbon produced from a well. This may be expressed as standard cubic feet of gas per barrel of stock tank liquid.

Gas processing

The separation of constituents from natural gas for the purpose of making salable products and also for treating the residue gas to meet required specifications.

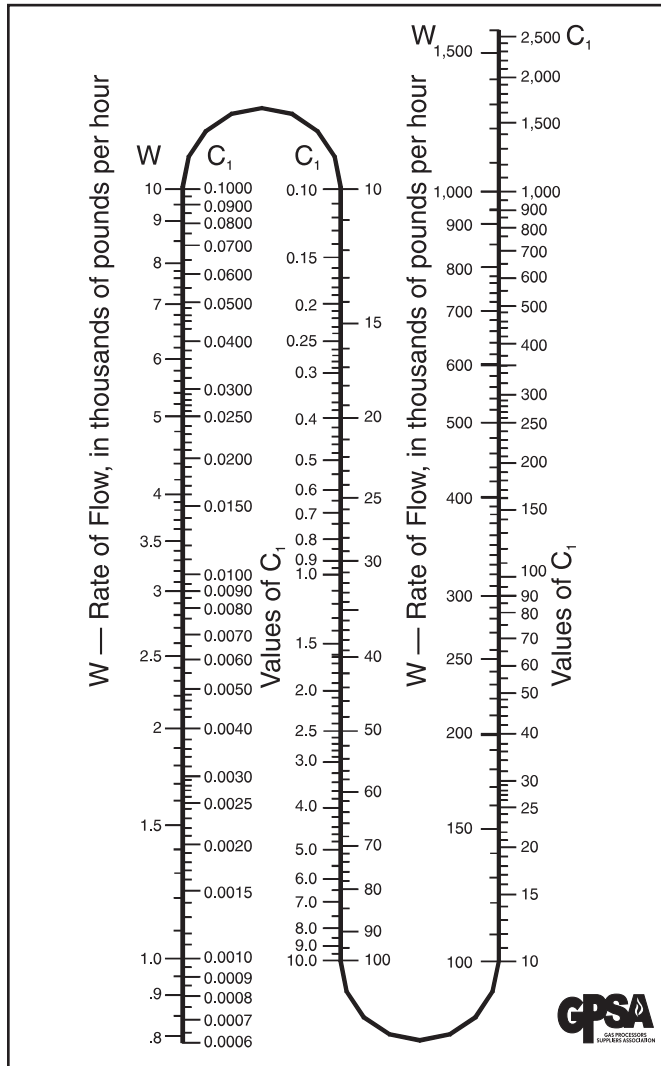
Gas processing plant

A plant which processes natural gas for recovery of natural gas liquids and sometimes other substances such as sulfur.

Gas-well gas

The gas produced or separated at surface conditions from the full well stream produced from a gas reservoir.

FIG. 17-8
Simplified Flow Formula for Compressible
Fluids⁵ Values of C₁



ting the desired ΔP_{100} and solving for C_2 with a given flow. For a given flow and pipe size, ΔP_{100} can be solved directly.

Example 17-1 — Calculate the pressure drop in a 10-in., Schedule 40 pipe for a flow of 150,000 lb/hr of methane. Temperature is 60 °F and pressure is 750 psia. The compressibility factor is 0.905 (from Fig. 23-5).

Solution Steps

$$\rho = \frac{16.042 (750)}{10.73 (460 + 60) (0.905)} = 2.38 \text{ lb/ft}^3$$

C_1 from Fig. 17-8 is 22.5

C_2 from Fig. 17-9 is 0.0447

$$\Delta P_{100} = \frac{C_1 C_2}{\rho} = \frac{22.5 (0.0447)}{2.38} = 0.423 \text{ psi/100 ft using Equation 17-31}$$

Example 17-2 — Calculate the required line size (of Schedule 40 pipe) to give $\Delta P_{100} = 1$ psi or less when flowing 75,000 lb/hr of methane at 400 psia and 100 °F. The compressibility factor is 0.96 (from Fig. 23-5).

Solution Steps

$$\rho = \frac{16.062 (400)}{10.73 (460 + 100) (0.96)} = 1.11 \text{ lb/ft}^3$$

C_1 from Fig. 17-8 is 5.6

$$C_2 = \frac{(\Delta P_{100}) \rho}{C_1} = \frac{1 (1.11)}{5.6} = 0.20$$

From Fig. 17-9 the smallest size of Schedule 40 pipe with C_2 less than 0.20 is 8-in. pipe. For 8 in. Sch 40 pipe, C_2 is 0.146. The actual pressure drop can then be calculated as:

$$\Delta P_{100} = \frac{5.6 (0.146)}{1.11} = 0.74 \text{ psi/100 ft}$$

using Equation 17-31 for the above flow conditions.

Liquid Flow

For the calculation of pressure drop in liquid lines, the Darcy-Weisbach method, Equation 17-6, can be used. The calculation is simplified for liquid flows since the density can reasonably be assumed to be a constant. As a result, the Darcy-Weisbach calculation can be applied to a long run of pipe, rather than segmentally as dictated by the variable density in gas flow. In addition, several graphical aids are available for pressure drop calculation. Elevation pressure drops must be calculated separately using Equation 17-32. These elevation pressure gains or losses are added algebraically to the frictional pressure drops.

$$\Delta P_e = (0.00694) \rho_L Z_e \tag{Eq 17-32}$$

Water — A graph showing pressure drop for water per 100 feet as a function of flow rate in gallons per minute and pipe size is shown in Fig. 17-10. These data are based on the Hazen and Williams empirical formula¹⁰ using a “C” constant of 100 which is commonly used for design purposes in welded and seamless steel pipe.

Hazen and Williams formula for flow of water:

$$q = 0.442 d^{2.63} C \left(\frac{P_1 - P_2}{L} \right)^{0.54} \tag{Eq 17-33}$$

Where:

$C = 140$ for new steel pipe

$C = 130$ for new cast iron pipe

$C = 100$ is often used for design purposes to account for pipe fouling, etc.

Hydrocarbon — A graph showing pressure drop for hydrocarbons per 100 feet as a function of flow rate in gallons per minute and pipe size is shown in Fig. 17-11. This graph assumes a specific gravity of 1.0 (water). To correct for different liquid densities, the value read from Fig. 17-11 must be multiplied by the actual specific gravity to obtain the correct pressure loss.

FIG. 17-9
Simplified Flow Formula for Compressible Fluids⁵
Values of C₂

Nominal pipe size in.	Schedule number	Value of C ₂
1/8	40 s	7 920 000.
	80 x	26 200 000.
1/4	40 s	1 590 000.
	80 x	4 290 000.
3/8	40 s	319 000.
	80 x	718 000.
1/2	40 s	93 500.
	80 x	186 100.
	160	430 000.
	... xx	11 180 000.
3/4	40 s	21 200.
	80 x	36 900.
	160	100 100.
	... xx	627 000.
1	40 s	5 950.
	80 x	9 640.
	160	22 500.
	... xx	114 100.
1 1/4	40 s	1 408.
	80 x	2 110.
	160	3 490
	... xx	13 640.
1 1/2	40 s	627.
	80 x	904.
	160	1 656.
	... xx	4 630.
2	40 s	169.
	80 x	236.
	160	488.
	... xx	899.
2 1/2	40 s	66.7
	80 x	91.8
	160	146.3
	... xx	380.0
3	40 s	21.4
	80 x	28.7
	160	48.3
	... xx	96.6
3 1/2	40 s	10.0
	80 x	13.2
4	40 s	5.17
	80 x	6.75
	120	8.94
	160	11.80
	... xx	18.59
5	40 s	1.59
	80 x	2.04
	120	2.69
	160	3.59
	... xx	4.93
6	40 s	0.610
	80 x	0.798
	120	1.015
	160	1.376
	... xx	1.861

Nominal pipe size in.	Schedule number	Value of C ₂
8	20	0.133
	30	0.135
	40 s	0.146
	60	0.163
	80 x	0.185
	100	0.211
10	120	0.252
	140	0.289
	... xx	0.317
	160	0.333
	20	0.039 7
	30	0.042 1
	40 s	0.044 7
12	60 x	0.051 4
	80	0.056 9
	100	0.066 1
	120	0.075 3
	140	0.090 5
	160	0.105 2
	20	0.015 7
14	30	0.016 8
	... s	0.017 5
	40	0.018 0
	... x	0.019 5
	60	0.020 6
	80	0.023 1
	100	0.026 7
	120	0.031 0
	140	0.035 0
	160	0.042 3
16	10	0.009 49
	20	0.009 96
	30 s	0.010 46
	40	0.010 99
	... x	0.011 55
	60	0.012 44
	80	0.014 16
	100	0.016 57
	120	0.018 98
	140	0.021 8
18	160	0.025 2
	10	0.004 63
	20	0.004 83
	30 s	0.005 04
	40 x	0.005 49
	60	0.006 12
	80	0.007 00
	100	0.008 04
	120	0.009 26
	140	0.010 99
20	160	0.012 44
	10	0.001 41
	20 s	0.001 50
	30 x	0.001 61
	40	0.001 69
24	60	0.001 91
	80	0.002 17
	100	0.002 51
	120	0.002 87
	140	0.003 35
	160	0.003 85
	10	0.000 534
30	20 s	0.000 565
	... x	0.000 597
	30	0.000 614
	40	0.000 651
	60	0.000 741
	80	0.000 835
	100	0.000 972
	120	0.001 119
	140	0.001 274
	160	0.001 478
36	10	0.0001681
	... s	0.0001719
	20 xs	0.0001797
40	30	0.0001879
	10	0.0000642
	... s	0.0000654
	20 xs	0.0000678
48	30	0.0000704
	40	0.0000731

Nominal pipe size in.	Schedule number	Value of C ₂	
18	10	0.002 47	
	20	0.002 56	
	... s	0.002 66	
	30	0.002 76	
	... x	0.002 87	
	40	0.002 98	
	60	0.003 35	
	80	0.003 76	
	100	0.004 35	
	120	0.005 04	
	140	0.005 73	
	160	0.006 69	
	20	10	0.001 41
		20 s	0.001 50
30 x		0.001 61	
40		0.001 69	
60		0.001 91	
80		0.002 17	
100		0.002 51	
120		0.002 87	
140		0.003 35	
160		0.003 85	
24	10	0.000 534	
	20 s	0.000 565	
	... x	0.000 597	
	30	0.000 614	
	40	0.000 651	
	60	0.000 741	
	80	0.000 835	
	100	0.000 972	
	120	0.001 119	
	140	0.001 274	
30	160	0.001 478	
	10	0.0001681	
	... s	0.0001719	
	20 xs	0.0001797	
36	30	0.0001879	
	10	0.0000642	
	... s	0.0000654	
	20 xs	0.0000678	
40	30	0.0000704	
	40	0.0000731	

Note: The letters s, x, and xx in the columns of Schedule Numbers indicate Standard, Extra Strong, and Double Extra Strong pipe respectively

SECTION 26

Members

Gas Processors Suppliers Association

Sixty Sixty American Plaza, Suite 700
Tulsa, Oklahoma 74135
Phone: 918-493-3872
Fax: 918-493-3875
Email: gpsa@GPAglobal.org
<http://gpsa.GPAglobal.org>

The following is a listing of the members of GPSA. Please contact them directly for further information. Behind this listing of members, the GPSA companies are classified by the type of services and supplies that they provide to the industry. Services begin on page 26-16; Supplies begin on page 26-27.

Company& Address	Phone
A+ Corporation 41041 Black Bayou Road Gonzales, LA 70737 http://www.geniefilters.com	225-644-5255
Accurate Gas Products L.L.C. 116 Board Road Lafayette, LA 70508 http://www accurategasllc.com	337-269-1217
Accurate Lab Audits, LLC P.O. Box 248 Ville Platte, LA 70506	337-280-1003
Adsorption Technical Service, LLC 15138 Windsdowne Lane Cypress, TX 77429	281-256-0868
AECOM 7800 E. Union Ave. Denver, CO 80237 http://www.aecom.com	303-843-2000
Aeon PEC 801 E. Plano Pkwy, Suite 103 Plano, TX 75074 http://www.aeonPEC.com	214-679-9979
AF Global 945 Bunker Hill Rd., Suite 500 Houston, TX 77024 http://www.afglobalcorp.com	713-393-1347
Afton Pumps, Inc. 7335 Ave. No. Houston, TX 77011 http://www.aftonpumps.com	713-923-9731
Aggreko LLC 4540 Kendrick Plaza Drive, Suite 100 Houston, TX 77032 http://www.aggreko.com	281-731-6253
Agile Process Solutions, LLC P.O. Box 61447 Midland, TX 79711 http://www.agileprocesssolutions.com	432-570-4200

Company& Address	Phone
Air Liquide America Specialty Gases LLC 9810 Bay Area Blvd. Pasadena, TX 77507 http://www.airliquide.com/	281-474-5800
Airgas, Inc. 23 Plantation Park Dr. Bldg. 100, Ste. 103 Bluffton, SC 29910 http://www.airgas.com	404-617-9808
Allied Equipment, Inc. 8000 N. Golder Ave. Odessa, TX 79764	432-367-6000
Alphabet Energy 26225 Eden Landing Rd, Suite D Hayward, CA 94545 http://www.alphabetenergy.com	415-813-1201
Alpine Site Services 10875 Dover St., Unit 1100 Westminster, CO 80021 http://www.alpinesites.com	303-420-0048
AMACS Process Tower Internals 14211 Industry Street Houston, TX 77053 http://www.amacs.com	713-434-0934
AMCS Corp. 135 US Highway 202-206 Bedminster, NJ 7921 http://www.amscorp.com	908-719-6560
AMETEK Process Instruments 150 Freeport Road Pittsburgh, PA 15238	905-634-4401
Analytical Systems International 9215 Solon Road, Ste. A4 Houston, TX 77064 http://www.asikeco.com	281-516-3950

Company& Address	Phone
Anguil Environmental Systems 8855 N. 55th St. Milwaukee, WI 53223 http://www.anguil.com	414-365-6400
Anvil Corporation 1675 W. Bakerview Road Bellingham, WA 98226 http://www.anvilcorp.com	360-937-0550
APT Laboratory Services 5530 Marshall Street Arvada, CO 80002 http://www.airtest.net	303-420-5949
ARC Energy Equipment 252 Judice Road Sunset, LA 70587 http://www.arcenergyequipment.com	337-852-1105
Ardent Services LLC 170 New Camellia Blvd., Ste. 200 Covington, LA 70433	281-703-4649
Ariel Corporation 35 Blackjack Road Mt. Vernon, OH 43050 http://www.arielcorp.com	740-397-0311
Aspen Technology, Inc. 200 Wheeler Road Burlington, MA 1803 http://www.aspentech.com	781-221-6400
Atlas Copco Gas and Process 3037 Industrial Parkway Santa Maria, CA 93455 http://www.atlascopco-gap.com	805-928-5757
Audubon 111 Veterans Blvd., Ste. 1200 Metairie, LA 70005 http://www.aechou.com	504-535-2205
AXH Air-Coolers 9717 East 42nd St., Suite 203 Tulsa, OK 74146 http://www.axh.com	918-663-0811
AYERS, Michael, P.E. 3130 Walnut Bend #320 Houston, TX 77042-4779	713-447-0770
Azota Ltd. 9894 Bissonnet, Ste 580 Houston, TX 77036 http://www.azotaltd.com	281-768-4314
B.enviroSAFE, Inc. 601 Lonesome Prairie Trail Haslet, TX 76052 http://www.benvirosafe.com/	817-439-4767
Barry D. Payne & Associates, Inc. 10707 Corporate Dr. #222 Stafford, TX 77477 http://www.bdpayne.com	281-240-4488
Bartlett Equipment Co. 4951 S Mingo Rd Tulsa, OK 74146 http://www.bartlettequipment.com	918-627-7040
BASF Corp. 1111 Bagby Street, Ste. 2600 Houston, TX 77002 http://www.basf.com	713-759-3024

Company& Address	Phone
BCKK Engineering, Inc. 2500 No. Big Spring Midland, TX 79705 http://www.bckk.com	432-685-6095
Bechtel 3000 Post Oak Boulevard Houston, TX 77056-6503 http://www.bechtel.com	713-235-2000
Best PumpWorks 8885 Monroe Houston, TX 77061 http://www.bestpumpworks.com	713-956-2002
Bexar Energy Holdings, Inc. 111 Soledade, Ste. 830 San Antonio, TX 78205 http://www.bexarenergy.com	210-342-7106
BGE 2595 Dallas Parkway, Suite 204 Frisco, TX 75034 http://www.browngay.com	972-464-4837
Bilfinger Water Technologies 10497 Town & Country Way Suite 120 Houston, TX 77024 http://www.johnsonscreens.com	281-542-2167
Bilfinger Westcon Inc. P.O. Box 1735 Bismarck, ND 58502 http://www.westconindustries.com	701-222-0076
Black & Veatch Corp. Energy Division - Oil & Gas 5151 San Felipe, Ste. 2015 Houston, TX 77056 http://www.bv.com9	913-458-488
Boardman LLC 1135 S. McKinley Oklahoma City, OK 73108 http://www.boardmaninc.com	405-634-5434
Borets 1600 N. Garnett Rd. Tulsa, OK 74116 http://www.Borets.com	713-934-6742
Bowden Construction Co. Ltd. P.O. Box 12308 Odessa, TX 79768 http://www.bowdenconstruction.com	432-366-8877
Brenntag Pacific Inc. 450 Exchange Rd. Ogden, UT 84401 http://www.brenntag.com	303-882-2307
Brice Equipment Co. P.O. Box 7945 Midland, TX 79708	432-697-3111
Bryan Research & Engineering, Inc. P.O. Box 4747 Bryan, TX 77805 http://www.bre.com/	979-776-5220
Bubba's Got Gas Construction 4222 FM 621 San Marcos, TX 78666 http://www.bubbasgotgas.com	512-392-9999
Buffalo Gap Instrumentation & Electrical 325 N. West Street Buffalo Gap, TX 79508 http://www.bgie.net	325-572-3389

Company& Address	Phone
Burckhardt Compression U.S. 7240 Brittmoore Rd., Ste. 100 Houston, TX 77041 http://www.burckhardtcompression.com	281-582-1059
BWFS Industries, LLC 5637 Etheline Houston, TX 77039 http://www.bwfsindustries.com	281-590-9391
C.R.C. Consulting P.O. Box 736 Perryton, TX 79070 http://www.crc-consulting.com	806-435-3418
C3 Resources, LLC 8556 Katy Freeway, Ste 124 Houston, TX 77024 http://www.c3resources.com	713-476-9958
Cameron Process Systems 11210 Equity Dr., Ste. 100 Houston, TX 77041 http://www.c-a-m.com	713-619-7105
Cameron Valves and Measurement 3250 Briarpark Drive, Suite 300 Houston, TX 77042 http://www.c-a-m.com	713-249-5802
Catalytic Combustion Corporation 709 21st Avenue Bloomer, WI 54724 http://www.catalyticcombustion.com	715-568-2882
Catalytic Products International, Inc. 980 Ensell Road Lake Zurich, IL 60047 http://www.cpilink.com	847-483-0334
Catamount Constructors 1527 Cole Blvd. Suite 100 Lakewood, CO 80401 http://www.catamountinc.com	303-679-0087
Caterpillar Inc. 10203 Sam Houston Park Drive Suite 400 Houston, TX 77064 http://www.cat.com	713-329-2207
CCC Group, Inc. 5797 Dietrich Rd. San Antonio, TX 78219 http://www.cccgroupinc.com	210-662-4513
CDI Engineering 11200 Richmond Avenue Suite 500 Houston, TX 77082 http://www.edicorp.com	
CDM Resource Management LLC 20405 Tomball Parkway, Ste. 700 Houston, TX 77070 http://www.cdrrm.com	281-376-2980
CECA Molecular Sieves/Arkema Inc. 900 First Avenue King of Prussia, PA 19406 http://www.cecachemicals.com	410-424-0220
CEI Engineering Associates 3030 LBJ Freeway, Ste. 100 Dallas, TX 75234 http://www.ceieng.com	217-212-7941

Company& Address	Phone
CH2M 14701 St. Mary's Lane, Ste. 300 Houston, TX 77079 http://www.ch2m.com	281-721-8400
Chapman Corporation 331 South Main Street Washington, PA 15301	724-250-2245
Chart Energy & Chemicals 8665 New Trails Dr., #100 The Woodlands, TX 77381 http://www.chart-ec.com	713-907-0711
Chemical Products Industries, Inc. 7649 SW 34th St. Oklahoma City, OK 73179 http://www.chemicalproductsokc.com	405-745-2070
Chiyoda Corp. Minatomirai Grand Central Tower 4-6-2, Minatomirai, Nishi-ku Yokohama, Japan 220-8765 http://www.chiyoda-corp.com/en/	81-45-225-7601 Ext 2
Chromatic Industries 15B S. Trade Center Pkwy. Conroe, TX 77385 http://www.hemiwedge.com	936-539-5770
Ci Actuation 1619 E. Richey Rd. Houston, TX 77073 http://www.ciactuation.com	832-577-2222
Cimation 10205 Westheimer Rd., Ste. 100 Houston, TX 77042 http://www.cimation.com	713-452-3350
City Pipe & Supply Corp. 2108 W. 2nd Odessa, TX 79763 http://www.citypipe.com	800-688-7473
Coastal Chemical Co., LLC 5300 Memorial Drive, Suite 1020 Houston, TX 77007 http://www.coastalchem.com	281-974-5897
Coastal Flow Measurement, Inc. 2222 Bay Area Blvd., Suite 200 Houston, TX 77058 http://www.coastalflow.com	281-282-0622
COMPRESSORtech 12777 Jones Road, Ste. 225 Houston, TX 77070 http://www.compressortech2.com	281-890-5310
Condit Co. 7255 E 46th ST Tulsa, Ok 74145 http://www.conditcompany.com	918-663-5310
Conestoga-Rovers & Associates 2270 Springlake Road, Suite 800 Dallas, TX 75234 http://www.craworld.com	972-331-8500
Connelly-GPM, Inc. 3154 So. California Ave. Chicago, IL 60608	312-247-7237
Contek Solutions LLC 6221 Chapel Hill Blvd., Ste. 300 Plano, TX 75093 http://www.conteklc.com	469-467-8296

Company& Address	Phone
Cook Compression 1585 Sawdust Rd, Suite 200 The Woodlands, TX 77380	281-636-8431
Corval Group 2 N. Last Chance Gulch Helena, MT 59601 http://www.corvalgroup.com	406-439-3111
Crossfire, LLC 4869 W. 20th St. Unit E Greeley, CO 80634 http://www.crossfire-llc.com	720-618-7579
Crossway Surveying, Inc. 6000 Western Place, Ste. 700 Fort Worth, TX 76107 http://www.crossway-si.com	817-550-8016
CSI Compressco LP P.O. Box 60760 Midland, TX 79711 http://www.csicompressco.com	432-563-1170
CTJ Energy Solutions 8932 South Freeway Fort Worth, TX 76140 http://www.ctjenergy.com	817-345-7600
Cummings Electrical, Inc. 14900 Grand River Road, Ste. 124 Fort Worth, TX 76155 http://www.cummingselec.com	817-355-5300
Cummins Inc. 19410 Forest Timbers Ct. Humble, TX 77346 http://www.cumminsoilandgas.com	713-805-4571
DanCar Energy Construction 10551 Miller Road, Ste. 100 Dallas, TX 75238 http://www.dancargroup.com	972-633-1200
Dayton Lease & Pipeline Services, Inc. PO Box 72 2259 Hwy 146 S Dayton, TX 77535 http://www.dlpsinc.com	936-367-7053
DCG Partnership 1, Ltd. 4170A S. Main Pearland, TX 77581	281-648-1894
Desert NDT, LLC 16701 Greenspoint Park Dr., #100 Houston, TX 77060 http://desertndt.com	832-426-3852
Devco USA 6846 South Canton, Suite 400 Tulsa, OK 74137 http://devcousa.com	918-496-4400
Dew Point Control, LLC PO Box 18887 Sugar Land, TX 77479-8887 http://www.dewpointcontrol.com	281-265-0101
Diablo Analytical, Inc. 5141 Lone Tree Way Antioch, CA 94531 http://www.diabloanalytical.com	925-755-1005
Dickson Process Systems, Ltd. P.O. BOX 60478 Midland, TX 79711 http://www.dicksonprocess.com	432-561-8594

Company& Address	Phone
Dollahon PR 10702 E. 11th St. Tulsa, OK 74128 http://www.dollahonpr.com	918-894-4455
Dresser-Rand Co. 10205 Westheimer Rd. Suite 1000 Houston, TX 77042 http://www.dresser-rand.com	713-935-3422
Eastman Chemical 11006 Cranbrook Houston, TX 77042 http://www.eastman.com	281-750-2661
Eaton Metal Products Company, LLC 4800 York Street Denver, CO 80216 http://www.eatonmetal.com	303-296-5729
EDG, Inc. 10777 Westheimer Rd., #700 Houston, TX 77042 http://www.edg.net	713-977-2347
Element Materials Technology 2120 West Willow Scott, LA 70583	337-232-3568
Elite Compression Services LLC 2209 SW Ben Jordan Victoria, TX 77901	361-894-6320
Elkhorn Holdings Inc 71 Allegiance Cir Evanston, WY 82930 http://www.elkhornconstruction.com	307-789-1595
E-MC Electrical 308 E. Kennedale Pkwy. Kennedale, TX 76060 http://www.e-mc7.com	817-985-0500
EMD, Inc. 1411 Twin Oaks Wichita Falls, TX 76302 http://www.emdinc.com	940-322-2206
Emerson Process Management 11502 Del Monte Houston, TX 77077 http://www.emerson.com	512-466-5968
EMK3 1415 Legacy Drive, Ste. 220 Frisco, TX 75034 http://www.emk3.com	972-668-6601
Enerflex 10815 Telge Road Houston, TX 77095	281-345-5021
Energy Developments Inc. 3322 West End Ave, Suite 115 Nashville, TN 37203 http://www.energydi.com	615-574-7560
Energy Solutions International (ESI) 7904 N. Sam Houston Pkwy W., Ste. 100 Houston, TX 77064 http://www.energy-solutions.com	281-664-8223
ENGlobal Corporation 10901 W. 120th Ave, Suite 400 Broomfield, CO 80021 http://www.ENGglobal.com	303-439-4325

Company& Address	Phone
Enovation Controls PO Box 470248 Tulsa, OK 74147 http://www.enovationcontrols.com	918-317-4100
EnRUD Resources, Inc. 1006 Vista Road Pasadena, TX 77504 http://www.enrud.com	713-943-1600
EnSiteUSA 3100 S. Gessner, Ste. 400 Houston, TX 77063 http://www.ensiteusa.com	713-456-7880
Entero Corp. 1040 - 7 Ave SW Suite 500 Calgary, AB T2P 3G9 http://www.entero.com	403-261-1820
EPC, Inc. 101 Glenda Street Whitehouse, TX 75791 http://www.epc0392.com	903-939-1555
EPCON International Inc. 9801 Westheimer Rd Suite 1002 Houston, TX 77042	281-398-9400
EPIC 420 20th Street North, Ste. 2200 Birmingham, AL 35203 http://www.epicbrokers.com	205-223-3358
ESD Simulation Training Inc. 2323 South Voss Road, Ste. 605 Houston, TX 77057 http://www.esd-simulation.com	713-532-2460
eSimulation, Inc. 16516 El Camino Real #248 Houston, TX 77062 http://www.esimulation.com	713-962-3107
Everest Sciences 7737 E. 42nd Place, Suite H Tulsa, OK 74145 http://www.everestsciences.com	918-770-7190
Evonik Corp. 10200 Grogans Mill Road, Ste. 500 The Woodlands, TX 77380 http://www.evonik.com/northamerica	281-465-2600
EXP Engineering International 4055 International Plaza, Suite 460 Fort Worth, TX 76109 http://www.EXP-eng-int.com	817-953-3013
EXTERRAN 20602 E. 81st St. Broken Arrow, OK 74014 http://www.exterran.com	918-251-8571
Fabreeka International 13207 Tall Forest Cypress, TX 77429 http://www.fabreeka.com	281-894-5997
Fabsco Shell & Tube, LLC 2410 Industrial Rd. Sapulpa, OK 74066 http://www.fabscolc.com	918-224-7550

Company& Address	Phone
Fabwell Corp. 8410 S. Regency Drive Tulsa, OK 74131-3621 http://www.fabwell.com	918-224-9060
Federal Services LLC 120 E. Main Street Oklahoma City, OK 73104 http://www.federalservicesllc.com	405-239-7301
Ferus Natural Gas Fuels (CNG), LLC 800 Town and Country Blvd. Suite 300 Houston, TX 77024 http://www.ferus.com	832-731-8851
FESCO, Ltd. 1100 FESCO Avenue Alice, TX 78332 http://www.fescoinc.com	361-661-7015
FES-Southwest, Inc. 19221 IH-45 South Ste. 340 Conroe, TX 77385 http://www.fessw.com	281-296-7920
Filtration Technology Corp. 11883 Cutton Road Houston, TX 77066 http://www.ftc-houston.com	713-849-0849
Fisher Controls 301 S. 1st Ave. Marshalltown, IA 50158 http://www.emerson.com	641-754-2159
Fives Cryo Inc. 17314 State Hwy 249, #108 Houston, TX 77064 http://www.fivesgroup.com	346-333-6320
Flatrock Engineering and Environmental 18615 Tuscany Stone, Suite 380 San Antonio, TX 78258 http://www.flatrockenergy.com	210-568-1707
Flow-Cal, Inc. 2525 Bay Area Blvd, Ste. 500 Houston, TX 77058 http://www.flowcal.com	281-282-0865
Fluor Enterprises, Inc. Polaris Way Aliso Viejo, CA 92698 http://www.fluor.com	949-349-2231
Forum Energy Technologies 10344 Sam Houston Park Drive Suite 300 Houston, TX 77064 http://www.f-e-t.com	281-773-4765
Foster Wheeler USA Corp. 585 N. Dairy Ashford Houston, TX 77079 http://www.amecfw.com	713-929-5000
Frames Inc. 4325 W. Sam Houston Pkwy N. Suite 130 Houston, TX 77043 http://www.frames-group.com	713-466-9000
Freese and Nichols, Inc. 4055 International Plaza, Ste. 200 Fort Worth, TX 76109 http://www.freese.com	817-735-7300

Company& Address	Phone
G2 Partners, LLC 10850 Richmond Ave., Ste. 200 Houston, TX 77042 http://www.g2partnersllc.com	713-260-4000
Gas Analytical Services 8444 Water Street Stonewood, WV 26301 http://www.gasana.com	304-541-8320
Gas Analytical Solutions, Inc. 19330 Highway 155 South Flint, TX 75762	903-825-2136
Gas and Supply 111 Buras Drive Belle Chasse, LA 70037 http://www.gasandsupply.com	504-234-7700
Gas Equipment Co., Inc. 11616 Harry Hines Blvd Dallas, TX 75229 http://www.gasequipment.com	972-280-8430
Gas Packaging Engineering Ltd. 5100, 150-6th Avenue S.W. Calgary, AB T2P 3Y7 http://www.gaspackages.com 403-538-2164	972-280-8430
Gas Technology Corp. 1425 Greenway Drive, Suite 450 Irving, TX 75038 http://www.gastech.net	972-255-7800
GC2 Specialty Construction, LP 2620 S. Sam Houston Parkway West Houston, TX 77047 http://www.gc-2.com	979-373-8313
GDS Corp. 1245 Butler Rd. League City, TX 77573 http://www.gdscorp.com	409-927-2980
GE Oil & Gas P.O. Box 470305 Fort Worth, TX 76147	817-307-5129
GE Power & Water 1101 W. Saint Paul Ave. Waukesha, WI 53188 http://www.dresserwaukesha.com	262-547-3311
GEA Refrigeration North America Inc. 3475 Board Road York, PA 17406 http://www.gea.com	717-487-7577
Geolex, Inc. 500 Marquette Ave. NW #1350 Albuquerque, NM 87102 http://www.geolex.com	505-842-8000
Global Compressor, L.P. 13415 Emmett Road Houston, TX 77041 http://www.globalcompressorparts.com	713-983-8773
Gly-Tech Services 2054 Paxton St. Harvey, LA 70058 http://www.glytech.com	504-348-8566
Grae-Con Construction, Inc. P.O. Box 1778 880 Kingsdale Rd. Steubenville, OH 43952 http://www.graecon.com	740-282-6830

Company& Address	Phone
Graves Analytical Services LLC 3875 Hammer Ranch Road Colorado Springs, CO 80929	719-683-4000
Great Plains Analytical Services 303 W. 3rd St. Elk City, OK 73644 http://www.gas-stacktesting.com	781-706-9185
Greene's Synergy Services PO Box 1026 Magnolia Springs, AL 36555 http://www.greenesenergy.com	251-971-3105
Gregory Gas Services LLC PO Box 739 Meeker, OK 74855 http://www.gregorygasservices.com	405-835-2262
Guild Associates, Inc. 5750 Shier-Rings Road Dublin, OH 43016 http://www.moleculargate.com	908-752-6420
Gulf Coast Chemical, LLC 220 Jacquelyn Street Abbeville, LA 70510 http://www.gulfcoastchemical.com	337-898-0213
Gulf Coast Dismantling, Inc. P.O. Box 5249 Pasadena, TX 77508	281-487-0595
Gulf Coast Engineered Solutions, Inc. 25511 Budde Rd. Suite 1001 Spring, TX 77380 http://www.gces-inc.com	281-210-1395
Gulf Coast Measurement, Inc. P.O. Box 854 Cypress, TX 77410	281-357-0992
Gulf Interstate Engineering 16010 Barkers Point Lane, Ste. 600 Houston, TX 77079 http://www.gie.com	713-850-3585
Gulf Publishing Co. 2 Greenway Plaza, Ste. 1020 Houston, TX 77046 http://www.hydrocarbonprocessing.com	713-523-4443
H & S Valve Inc. 6704 No. County Rd. West Odessa, TX 79702	432-362-0486
H.J. Baker, PE 1511 Rock Ridge Drive Cleveland, OK 74020	918-358-5286
H+M Industrial EPC 5820 Center Street Pasadena, TX 77505 http://www.hm-ec.com	281-617-2247
Half TriTex 1201 North/Bowser Road Richardson, TX 75081 http://www.tritextech.com	214-217-6502
Halker Consulting LLC 9400 Station Street, Ste. 300 Lone Tree, CO 80124 http://www.halkerconsulting.com	303-515-2700

Company& Address	Phone
Hampel Oil Distributors P.O. Box 12346 Wichita, KS 67277 http://www.hampeloil.com	316-619-6163
Hatch Mott MacDonald 11233 Shadow Creek Parkway, Ste. 400 Pearland, TX 77584 http://www.hatchmott.com	832-736-9590
Heatec Inc. 5200 Wilson Road Chattanooga, TN 37410 http://www.heatec.com	423-821-5200
Heath Consultants Incorporated 9030 Monroe Road Houston, TX 77061 http://www.heathus.com	713-844-1300
Hero Flare, LLC 445 FM 20 Bastrop, TX 78602 http://www.heroflare.com	512-772-5744
HETSCO, Inc. 505 Pushville Rd. Greenwood, IN 46143 http://www.hetsco.com	317-535-4315
Hoerbiger Compression Technology 1358 W. Newport Center Drive Deerfield Beach, FL 33442 http://www.hoerbiger.com	954-246-1352
Holloman Corporation 333 N. Sam Houston Pkwy. Houston, TX 77060	432-257-0109
Howard Energy Partners 17806 IH 10 West, Suite 210 San Antonio, TX 78257 http://www.howardep.com	210-298-2222
Howden Compressors Inc. 1850 N Gravers Rd Suite 200 Plymouth Meeting, PA 19462 http://www.howden.com	610-313-9800
Hunt, Guillot & Associates 603 Reynolds Drive Ruston, LA 71270 http://www.hga-llc.com	318-255-6825
Huntsman Corp. 3040 Post Oak Blvd. Houston, TX 77056	713-235-6000
HyBon Engineering 2404 Commerce Drive Midland, TX 79704	432-697-2292
Hydrocarbon Technology Engineering 802 Merritt St., SE Grand Rapids, MI 49507	616-452-3279
HydroCat Industries 1734 Clarkson Road, #208 Chesterfield, MO 63017 http://www.hydrocatindustries.com	636-272-8000
Hytech Plant Design 1415 North Loop West, Ste. 614 Houston, TX 77008 http://www.hytech-eng.com	713-239-2910

Company& Address	Phone
I & S Technical Resources, Inc. 248 Twin Lakes Blvd West Columbia, TX 77486	832-476-5473
Industrial Distributors, Inc. 4920 Nome St., Unit A Denver,, CO 80239 http://www.idiprocess.com	303-375-9070
INEOS GAS/SPEC Technology Group 2600 S. Shore Blvd., Suite 400 League City, TX 77573 http://www.ineos.com	281-535-4353
International Oil & Gas Consultants Pte, Ltd. 360 Orchard Road, #12-02 International Bldg. Singapore, 238869 http://www.iog-consultants.com	+65 6235 9030
Interra Global Adsorbents 15415 Gettysburg Dr. Tomball, TX 77377 http://www.interraglobal.com	847-292-8600
Intertek 3741 Red Bluff Road, Suite 105 Pasadena, TX 77503 http://www.intertek.com	713-730-3901
Isotherm, Inc. 7401 Commercial Blvd E. Arlington, TX 76001 http://www.iso-therm.com	817-472-9922
ISTI Plant Services 17207 E. 21st St. Tulsa, OK 74134 http://www.istips.com	918-234-1097
J MAR & Associates 15455 Dallas Parkway Suite 220 Addison, TX 75001 http://www.jmarassociates.com	972-732-8301
J. H. Foglietta Consulting LLC 5827 Fairdale Lane Houston, TX 77057 http://fogliettaconsulting.com	713-962-0470
J.W. Williams an AECOM Company 19219 Katy Freeway, Suite 100 Houston, TX 77094 http://www.aecom.com	281-647-4437
Jacobs 12140 Wickchester Lane Houston, TX 77079	281-589-5009
JEM Resources & Engineering, Inc. 10 Desta Drive, Ste. 175 Midland, TX 79705 http://www.jemengineering.com/	432-352-0802
JFE Engineering Corporation 2-1 Suehiro-cho, Tsurumi-Ku, Yokohama, Japan 230-8611	81 45 505 07772
JGC Corporation 2-3-1 Minato mirai, Nishi-ku Yokohama, Japan 220-6001 http://www.jgc.co.jp	045-682-8468
John Zink Company LLC 11920 E. Apache Tulsa, OK 74116 http://www.johnzink.com	918-234-2999

Company& Address	Phone
Johnson Filtration Products, Inc. P.O. Box 30010 Amarillo, TX 79120	806-371-8033
Johnson Matthey P.O. Box 1 Belasis Avenue Billingham, Cleveland, TS23 1LB http://www.matthey.com	01-64-252-3773
Jonell, Inc P.O.Box 1092, 900 Industrial Pkwy Breckenridge, Tx 76424 http://www.jonellinc.com	254-559-7591
Joule Processing, LLC. 3200 Southwest Freeway, Ste. 2390 Houston, TX 77027 http://www.jouleprocessing.com	713-481-1864
JP3 Measurement 4109 Todd Lane, Suite 200 Austin, TX 78744 http://www.jp3measurement.com	281-813-1797
J-W Power Company 6025 S Quebec Street Suite 250 Centennial, CO 80111 http://www.jwenergy.com	720-385-3030
Kahuna Ventures 11400 Westmoor Circle, Ste. 325 Westminster, CO 80021 http://www.kahunaventures.com	303-451-7374
Kams, Inc. 1831 NW 4th Dr. Oklahoma City, OK 73106	405-232-2636
Kane Environmental Engineering 8816 Big View Drive Austin, TX 78730	281-370-6580
KBR 601 Jefferson Street, Ste. KT3398B Houston, TX 77002 http://www.kbr.com	713-753-5201
Kleinfelder 7805 Mesquite Bend, Suite 100 Irving, Tx 75063 http://www.kleinfelder.com	972-868-5934
Knighten Industries Inc. 3323 NC Rd. West Odessa, TX 79764	432-362-0468
Koch-Glitsch LP 12221 E. sam Houston Pkwy. N. Houston, TX 77044 http://www.kochglitsch.com	713-427-7602
KP Midstream 909 ESE Loop 323, Ste. 777 Tyler, TX 75701 http://www.kpamidstream.com	903-534-9155
KW International 1223 Brittonmoore Rd. Houston, TX 77043 http://www.kwintl.com	832-320-2607
L.A. Turbine 28557 Industry Drive Valencia, CA 91355 http://www.laturbine.com	661-294-8290

Company& Address	Phone
Laboratory Services 2609 W. Marland Hobbs, NM 88240	575-397-3713
LCM Industries, Inc. 1605 S. Marlin Dr. Odessa, TX 79763 http://www.lcmindustries.com	432-332-5516
Leidos Engineering One West Third, Ste. 200 Tulsa, OK 74103 https://www.leidos.com/engineering	918-492-1600
Light Tower Rentals 10613 West Sam Houston Parkway, Suite 100 Houston, TX 77064 http://www.ltr.com	281-640-3043
Linde Process Plants, Inc. 6100 S. Yale, Ste. 1200 Tulsa, OK 74136 http://www.lppusa.com	918-477-1200
LKS Midstream Consulting LLC 5960 West Parker Road #278 - 233 Plano, TX 75093 http://lksmidstream.com	469-443-0637
Louisiana Valve Source, Inc. 101 Metals Dr. Youngsville, LA 70592 http://www.lavalve.com	337-856-9100
M & J Valve 4150 S. 100 East Ave., Ste. 200W Tulsa, OK 74146	918-663-9595
M Chemical Company 850 Colorado Blvd Los Angeles, CA 90041 http://www.mchemical.com	323-254-3600
M J & H Fabrication 2120 Hall Blvd. Ponca City, OK 74601 http://www.mjhfab.com	580-749-5339
Mangan, Inc. 1650 Highway 6 South Suite 200 Sugar Land, TX 77478 http://www.manganinc.com	281-795-8103
Martin Energy Consultants P.O. Box 8064 The Woodlands, TX 77387	281-367-9401
Master Corporation 1330 East 8th St., Suite 105 Odessa, TX 79761-4713 http://www.mastercorporation.com	432-580-0600
Masters Process Equipment 26118 North IH-45 Spring, TX 77386 http://www.mastersprocess.com	281-367-5699
Mayekawa USA, Inc. 1770 St. James Place Houston, TX 77056 http://mayekawausa.com	832-547-2320
McAfee & Taft 1717 S. Boulder Ave, Ste. 900 Tulsa, OK 74119 http://www.mcafeetaft.com	918-587-0000

Company& Address	Phone
McDaniel Technical Services Inc. P.O. Box 2557 Broken Arrow, OK 74013 http://www.mcdanieltsi.com	918-294-1628
Mechanical Equipment, Inc. P.O. Box 1800 Midland, TX 79702	432-687-0601
MEGTEC Systems Inc. 830 Prosper Road De Pere, WI 54115	920-339-2787
MEI, LLC 138 Canal Street, Suite 501 Pooler, GA 31322 http://www.mei-consult.com	912-355-8001
Merichem 5455 Old Spanish Trail Houston, TX 77023 http://www.merichem.com	713-428-5198
MHBT, Inc. 8144 Walnut Hill Lane, 16th Floor Dallas, TX 75231 http://www.mhbt.com	972-770-1655
Michael AYERS, P.E. 3130 Walnut Bend, #320 Houston, TX 77042-4779	713-447-0770
Michell Instruments Inc. 14915 Terra Point Cypress, TX 77429 http://www.michell.com/us	281-728-3982
Mid-States Supply 1716 Guinotte Ave. Kansas City, MO 64120 http://www.midcoonline.com	800-825-1410
Midstream Energy Group, Inc. 10707 Corporate Drive, Ste. 158 Stafford, TX 77477 http://www.midstreamenergygroup.com	713-582-2579
Midway Laboratory, Inc. 315 Main Street Taft, CA 93268 http://www.midwaylaboratory.com	661-765-2364
MIRATECH Corp. 420 So. 145th East Ave. Tulsa, OK 74108	918-622-7077
MODEC International Inc. 15011 Katy Freeway, Suite 500 Houston, TX 77094 http://www.modec.com	281-529-8100
Monico Monitoring, Inc. 18530 Klein Church Rd. Spring, TX 77379 http://www.monicoinc.com	281-350-8751
Moore Control Systems, Inc. 1435 Katy-Flewellen Katy, TX 77494 http://www.moore-control.com	281-392-7747
MSES Consultants, Inc. 609 West Main St. Clarksburg, WV 26302 http://www.msproducts.com	304-624-9700

Company& Address	Phone
Mueller Environmental Designs PO Box 1088 Brookshire, TX 77423 http://www.muellerenvironmental.com	713-465-0995
Mustang Cat 12800 NW Freeway Houston, TX 77040	713-460-7238
Nalco, An Ecolab Company 1601 W. Diehl Road Naperville, IL 60563 http://www.nalco.com	630-305-1000
Neuman & Esser USA, Inc. 1502 East Summitry Circle Katy, TX 77449 http://www.neuman-esser.com3	713-554-962
New Tech Global Ventures 202 Madison Square Colleyville, TX 76034 http://www.ntglobal.com	817-821-8107
Nexo Solutions 9391 Grogans Mill Rd., Ste. A-6 The Woodlands, TX 77380 http://www.nexosolutions.com	832-510-8191
Niagara Blower 91 Sawyer Ave. Tonawanda, NY 14150 http://www.niagrabllower.com	716-875-2000
Nicholas Consulting Group, Inc. 600 N. Marienfeld, Suite 390 Midland, TX 79701 http://www.thencg.com	432-570-8093
Nitro-Lift Technologies LLC 1200 W. Interstate Drive Norman, OK 73072 http://www.nitrolift.com	405-360-3722
Nomad Field Services 11400 Westmoor Circle Westminister, CO 80021 http://www.nomadfieldservices.com	720-889-9962
NorthStar Energy Services, Inc. 15025 East Freeway Channelview, TX 77530 http://www.nses.com	281-864-2014
Norwood S&S, LLC 6415 Calle Lozano Dr. Houston, TX 77041-2559 http://www.NorwoodSS.co	281-558-2946
Nova Molecular Technologies 1 Parker Place, Ste. 725 Janesville, WI 53545	608-754-6682
NTACT Operations, LLC 12615 West County Road 91 Midland, TX 79707 http://ntactops.com	817-680-0253
Omni Flow Computers, Inc. 12620 W. Airport Blvd., Ste. 100 Sugar Land, TX 77479 http://www.omniflow.com	281-240-6161
On Pointe 7580 East 151st Street Bixby, OK 74008 http://www.opec.com	918-394-9444

Company& Address	Phone
Onsite Power Inc. 6525 S. Riviera Way Aurora, CO 80016	303-690-8486
Optimized Gas Treating, Inc. 12337 Jones Rd., Ste. 432 Houston, TX 77070 http://www.ogtrt.com	580-428-3535
Optimized Process Designs 25610 Clay Road Katy, TX 77493 http://www.opd-inc.com	281-371-5909
Optimized Process Furnaces 3995 S Santa Fe Chanute, KS 66720 http://www.firedheater.com	620-431-1260
Ortloff Engineers, Ltd. 415 W. Wall, Ste. 2000 Midland, TX 79701 http://www.ortloff.com	432-685-0277
Osynergy 23088 N. Moorefield Rd. Edinburg, TX 78541 http://www.osynergylc.com	956-581-4300
Pantechs Laboratories, Inc. 5915 50th Street Lubbock, TX 79424 http://www.pantechs.com	806-797-4325
Panton Inc. 24 E. Greenway Plaza, Ste. 1180 Houston, TX 77046	713-589-6852
Paratherm - Heat Transfer Fluids 31 Portland Road West Conshohocken, PA 19355 http://www.paratherm.com	610-941-4900
Parker Hannifin Corp. 500 S. Glaspie St. Oxford, MI 48371 http://www.parker.com	248-628-6400
Parsons Corporation 2200 West Loop South, Ste. 200 Houston, TX 77027 http://www.parsons.com	713-871-7454
PECOFacet 118 Washington Avenue Mineral Wells, TX 76068 http://www.pecofacet.com	940-325-2575
Peerless Mfg. Co. 14651 N. Dallas Pkwy, Ste. 500 Dallas, TX 75254 http://www.peerlessmfg.com	214-357-6181
Pelican Energy consultants, LLC 2150 Town Square Place Suite 250 Sugarland, TX 77479 http://www.pelicanenergy.com	409-377-3855
Pennwell Corp. 1455 West Loop S Houston, TX 77027 http://www.pennwell.com	713-963-6276
Pentair Porous Media 4301 West Davis Conroe, TX 77304 http://www.pentair.com	936-788-1000

Company& Address	Phone
Perry Gas Processors LP P.O. Box 13270 Odessa, TX 79768	432-332-0100
Petral Consulting Co. P.O. Box 42586 Houston, TX 77242 http://www.petral.com	713-977-0144
PetroSkills/John M. Campbell 1215 Crossroads Blvd Norman, OK 73072 http://www.petroskills.com	405-321-1383
PFEC, Inc. 28010 FM 2978 Magnolia, TX 77354 http://www.pfecinc.com	281-356-1107
PLH Group 400 Las Colinas Blvd. Irving, TX 75039 http://www.plhgroupinc.com	360-202-2353
Power & Control Engineering Solutions 12611 East 60th St. So. Tulsa, OK 74146 http://www.pcescorp.com	918-627-7237
Prime Controls, LP 1725 Lakepointe Dr. Lewisville, TX 75057 http://www.prime-controls.com	972-221-4849
Priority Power Management, LLC 690 E. Lamar Blvd. Arlington, TX 76011 http://www.prioritypower.net	817-994-2285
ProActive Services, LLC 2061 W. Main Street Salem, WV 26426 http://www.proactiveserviceswv.com	304-288-7104
Professional Engineering Consultants, P.A. 303 S. Topeka Wichita, KS 67202 http://www.pecl.com/energy	316-262-2691
PSI (Process Solutions Integration) 6654-A Canyon Drive Amarillo, TX 79109 http://www.psi-technology.com	806-356-9800
Puffer Sweiven 4230 Greenbriar Drive Stafford, TX 77477 http://www.puffersweiven.com	281-240-2000
Q.B. Johnson Manufacturing, Inc. 9000 S. Sunnyslane Rd. Oklahoma City, OK 73189 http://www.qbjohnson.com	405-677-6676
Q2 Technologies, LLC 14720 Highway 105 West, #200 Montgomery, TX 77356 http://www.q2technologies.com	936-588-2242
QPS Engineering 4500 S. Garnett Rd., ste. 700 Tulsa, OK 74146 http://www.qpsepc.com	918-858-7620
QuantityWare GmbH Zeiloch 1b Bruchsal, 76646 http://www.quantityware.com	49 7251 982 3003

713-984-8900

Company& Address	Phone
Questar Energy Services P.O. Box 1129 Rock Springs, WY 82902	307-352-7281
Quorum Business Solutions, Inc. 811 Main Street, Ste. 2000 Houston, TX 77002 http://www.qbsol.com	713-260-5928
R & R Engineering Co., Inc. P.O. Box 700005 Tulsa, OK 74170-0005	918-252-2571
Randall Gas Technologies 2103 Research Forest Drive The Woodlands, TX 77380 http://www.cbi.com	832-513-1366
Ranger Plant Constructional Co. Inc. 5851 E. Interstate 20 Abilene, TX 79601 http://www.rpccinc.com	325-677-2888
Red Ball Oxygen 609 N. Market Street Shreveport, LA 71107 http://www.redballoxygen.com	318-425-3211
Ref-Chem L.P. 1128 S. Grandview Ave. Odessa, TX 79761 http://www.ref-chem.com	432-332-8531
Regard Resources Co., Inc 555 Aero Dr. Shreveport, LA 71107 http://www.regardresources.com	318-425-2533
Reset Energy P.O. Box 8601 Midland, TX 79708 http://www.resetenergy.com	432-682-2020
Rexel Inc. 1030 Wirt Rd., Suite 400 Houston, TX 77055 http://www.rexelusa.com	713-458-0256
RGW Solutions 2505 Cypress Springs Ruston, LA 71270 http://RGWSolutions.com	870-500-1945
Rhine Ruhr Pty Ltd Unit 1, 10-30 West Circuit, Sunshine West Melbourne, Vi 3020 http://www.rhineruhr.com.au	61 3 9300 5000
River City Engineering 4830 Bob Billings Parkway, Suite 100B Lawrence, KS 66049 http://www.rivercityeng.com	785-842-4783
Robert R. Reis, Attorney-Mediator, P.C. 2287 E. 39th St. Tulsa, OK 74105	918-742-2028
Rockwell Automation 9119 Hwy. 6, Suite 230 #239 Missouri City, TX 77459 http://www.rockwell.com	832-802-1894
Rotor-Tech, Inc. 10613 Stebbins Circle Houston, TX 77379 http://www.rotor-tech.com	713-984-8900

Company& Address	Phone
Royal Filter Mfg. Co., Inc. 4327 S. 4th Chickasha, OK 73018 http://www.royalfilter.com	405-224-0229
S & B Engineers and Constructors, Ltd. 7825 Park Place Blvd. Houston, TX 77087	713-845-7850
S&B Infrastructure Private, Ltd. 100 E. 15th St., #650 Fort Worth, TX 76102 http://www.sbinfra.com	817-820-0036
Samson Controls, Inc. 4111 Cedar Blvd. Baytown, TX 77523 http://www.samson-usa.com	281-383-3677
Samuel Engineering, Inc. 8450 E. Crescent Pkwy., Ste. 2300 Greenwood Village, CO 80111 http://www.samuelengineering.com	303-714-4840
Saulsbury Industries, Inc. 2951 E. Interstate 20 Odessa, TX 79766	432-438-6436
Schneider Electric - Invensys 8610 S. 66th E. Ave. Tulsa, OK 74133 http://www.iom.invensys.com	918-492-6301
Schultz Process Services, Inc. 12515 Cypress N. Houston Rd. Cypress, TX 77429 http://www.sps-houston.com	281-894-2100
Scion Instruments 20323 Pinecreek Ridge Ln. Spring, TX 77379 http://scioninstruments.com/home.html	832-381-0203
S-CON, Inc. 8326 West State Hwy 21 Bryan, TX 77807 http://www.SCONinc.com	979-822-4466
Scott Measurement Service Inc P.O. Box 5247 Granbury, TX 76049 http://www.scottmeasurement.com	817-573-0036
SEC Energy Products & Services, LP 9523 Fairbanks N Houston Houston, TX 77064 http://www.sec-ep.com	281-890-9977
Select Engineering, Inc. 1717 S. Boulder, Suite 600 Tulsa, OK 74119 http://www.select-engineering.com	918-592-1133
Sepra-Chem Corp. 10975 Spur 248 Tyler, TX 75707 http://www.sepra-chem.com	903-566-1015
SERO Pump Systems, Inc. 3727 Greenbriar Drive, Ste. 105 Stafford, TX 77477 http://www.seropumps.com/	281-242-8080
Shamrock Gas Analysis 1100 South Madden St. Shamrock, TX 79097 http://www.sgalab.com	806-256-3249

Company& Address	Phone
Shea Writing & Training Solutions, Inc. 11602 Burdine Street Houston, TX 77035 http://www.sheaws.com	713-723-9142
Shrieve Chemical Products, Inc. 1755 Woodstead Court The Woodlands, TX 77380 http://www.shrieve.com	281-367-4226
Simms Machinery International 2357 A Street Santa Maria, CA 93455 http://simmsmachineryinternational.com	805-349-2540
SME Associates, LLC 6715 Theall Houston, TX 77066 http://www.sme-llc.com	281-440-7350
Smith & Burgess 7600 W. Tidwell Road, Ste. 600 Houston, TX 77040 http://www.smithburgess.com	713-802-2647
Smithco Engineering, Inc. 6312 S 39th West Avenue Tulsa, OK 74132 http://www.smithco-eng.com	918-446-4406
SNC-Lavalin E&C 9009 West Loop South, Suite 800 Houston, TX 77096-1719 http://www.snclavalin.com	713-667-9162
Spartan Energy Partners 9595 Six Pines Drive, Suite 4000 The Woodlands, Texas, TX 77380 http://www.spartanep.com	281-466-3315
Spartan Engineering, Inc. 10820 E. 45th St., Ste. 100 Tulsa., OK 74146 http://www.spartan-eng.com	918-895-7666
Spectra Energy 2600 425 1 Street SW Calgary AB, T2P 3L8 http://www.spectraenergy.com/	403-699-1015
SpectraSensors Inc. 4333 W. Sam Houston Parkway N., Ste. 100 Houston, TX 77043 http://www.spectrasensors.com	713-300-2719
Spitzer Industries 12141 Wickchester Lane Houston, TX 77079 http://spitzerind.com	832-783-7000
SPL, Inc. 8880 Interchange Drive Houston, TX 77054 http://www.spl-inc.com	713-660-0901
Stantec Consulting Services Inc. 12700 Park Central Drive, Suite 1025 Dallas, TX 75251 http://www.stantec.com	214-545-3454
Strategic Automation Services LLC 16203 Park Row Road, Ste. 140 Houston, TX 77084 http://SAS-web.com	281-945-8900

Company& Address	Phone
STS Consulting Services P.O. Box 9005 Longview, TX 75608 http://ststx.com	903-247-1787
STV/GWD 621 17th Street, Ste. 1200 Denver, CO 80293 http://www.gwddesign.net	303-951-9300
Sulfur Operations Support, Inc. P.O. Box 1770 Ocean Springs, MS 39566 http://www.sultrap.com	228-875-5515
SULPETRO INC. #600, 600-6th Avenue Calgary, AB T3H 2H5 http://www.sulpetro.com	403-233-9337
Sumitomo Precision Products 420 Lexington Ave, Suite 2806 New York, NY 10170 http://www.spp.co.jp/English/index2-e.html	212-354-5558
Sundyne Corporation 14845 West 64th Ave. Arvada, CO 80007 http://www.sundyne.com	303-425-0800
Sunland Construction Inc. 202B Magnate Drive Lafayette, LA 70508 http://www.sunlandconstruction.com	337-581-8653
Syvance 10900-B Stonelake Blvd. Suite 102 Austin, TX 78759 http://www.syvance.com	512-827-2908
T.F. Hudgins Inc. P.O. Box 920946 Houston, TX 77292	713-682-3651
Taylor Forge Engineered Systems 308 N. Iron Street Paola, KS 66071	913-294-5331
TECHNIP 11740 Katy Freeway, Suite 100 Houston, TX 77079 http://www.TECHNIP.com	281-249-2401
TEG Solutions, LLC P.O. Box 1395 El Reno, OK 73036 http://www.tegsol.com	405-274-6275
Terracon Consultants, Inc. 9522 East 47th Place, Unit D Tulsa, OK 74145 http://www.terracon.com	970-988-5435
Tetra Tech 2901 Wilcrest Drive, Suite 400 Houston, TX 77042 http://www.tetrattech.com/oilandgas	832-251-5187
Texas Turbine, Inc. 624 Profit St Azle, TX 76020 http://www.txturbine.com	817-444-5528
The Arrington Corporation P.O. Box 3128 Flint, TX 75762 http://www.arringtoncompanies.com	903-894-6157

Company& Address	Phone
The Brock Group 316 Georgia Avenue Deer Park, TX 77536 http://www.brockgroup.com	832-496-3004
The PROS Company 601 Texas Avenue Lubbock, TX 79401 http://www.thePROSCO.com	806-749-7761
Thermal & Mechanical Equipment Co. 1423 E. Richey Rd. Houston, TX 77073 http://www.tmec.com	713-688-8834
Thomas Petroleum Ltd. P.O. Box 1876 Victoria, TX 77902 http://www.thomaspetro.com	361-573-7662
Thurmond-McGlothlin, Inc. 1428 N. Banks Pampa, TX 79066 http://www.tm-ems.com	806-665-5700
TIC - The Industrial Company 9780 Mt. Pyramid Ct., Ste. 100 Englewood, CO 80112	303-880-8083
Tiger Valve Co. 4741 World Houston Parkway. St. 100 Houston, TX 77032 http://tigervalve.com	
Tomcej Engineering Inc. PO Box 1274 Station Main Edmonton, Al T5J 2M8 http://www.tomcej.com7	80-483-0248
Torrent Energy Services 5950 Berkshire Lane Dallas, TX 75225 http://www.torrentenergyservices.com	281-450-4000
Total Energy Corp. 100 W. Airport Road Stillwater, OK 74075 http://www.totalenergy.com	405-253-4728
Total Valve & Equipment PO Box 131464 The Woodlands, TX 77393 http://www.total-valve.com	713-855-1486
Tower Force 13510 Ralph Culver Road Houston, TX 77086	281-506-7152
Toyo Engineering Corp. 8-1, Akanehama 2-chome Narashino-shi, China, 275-0024 http://www.toyo-eng.com	81 47 451 1111
Trailhead Engineering 230 West 200 South Salt Lake City, UT 84101 http://www.trailheadeng.com	385-474-4053
TransTech Energy P.O. Box 8197 Rocky Mount, NC 27804 http://www.transtechenergy.com	252-801-1879

Company& Address	Phone
TransTex Hunter, LLC 777 Post Oak Blvd., Suite 810 Houston, TX 77056 http://www.transtexhunter.com	832-287-0204
TRC Companies, Inc. 7761 Shaffer Parkway, Ste. 100 Littleton, CO 80127 http://www.trcsolutions.com	303-395-4021
Trimeric Corp. P.O. Box 826 Buda, TX 78610 http://www.trimeric.com	512-295-8118
Trinity Consultants 12770 Merit Drive, Ste. 900 Dallas, TX 75251 http://www.trinityconsultants.com	972-661-8100
Trinity Containers, LLC 2525 Stemmons Freeway Suite 520 Dallas, TX 75207-2401 http://www.trinitycontainers.com	888-558-8529
Trinity Contractors 200 Highland Circle Argyle, TX 76226	940-240-5800
TriStar Global Energy Solutions 12600 N. Featherwood, Ste. 330 Houston, TX 77034 http://www.tristarges.com	281-484-2201
Troy Construction Co. 8521 McHard Road Houston, TX 77053 http://www.troyconstruction.com	281-437-8214
Tryer Process Equipment PO Box 3456 Wichita Falls, TX 76301 http://www.tryerpe.com	940-432-0130
United Steel Structures, Inc. 1330 Enclave Parkway - Suite 400 Houston, TX 77077 http://www.ussi.com	281-496-1300
United/Wells Inc. P.O. Box 4575 Odessa, TX 79760	915-362-2361
Universal Acoustic & Emission Technologies 1925 Hwys 51-138, P.O. Box 411 Stoughton, WI 53589 http://www.universalAET.com	608-877-7231
UOP Russell 7050 S Yale, Ste 210 Tulsa, OK 74136 http://www.honeywell.com	918-481-5682
Upstream Development and Engineering, Inc. 11767 Katy FWY, Suite 215 Houston, TX 77079 http://www.upstreamdne.com	281-752-7754
USA Environment, L.P. 10234 Lucore Street Houston, TX 77017 http://www.usaenviro.com	832-488-4088
Valdes Engineering Co. 100 W. 22nd Street, Suite 185 Lombard, IL 60148 http://www.valdeseng.com	630-792-1886

Company& Address	Phone
Valerus 919 Milam, Ste. 1000 Houston, TX 77002 http://www.valerus.com	713-744-6100
Valley Vessel Fabricators LLC 22310 N. Moorefield Rd. Edinburg, TX 78541 http://www.valleyvesselfabricators.com	817-374-9598
Vanco Equipment Co. 7033 E. 40th Street Tulsa, OK 74145	918-627-1920
Vanderpool Pipeline Engineers Inc. P.O. Box 590 Littleton, CO 80160 http://www.vpeinc.com	303-798-0275
VANEC 3374 Benzing Road Orchard Park, NY 14127 http://www.vanec.com	716-827-4959
Vapor Point P.O. Box 1239 La Porte, TX 77572 http://www.vaporpoint.net	281-867-8186
Varo Engineers, Inc. 2751 Tuller Parkway Dublin, OH 43017	614-459-0424 x 148
Vavco LLC 101 Mahood Road Butler, PA 16001 http://www.vavcollc.com	724-285-6684
Vector Controls and Automation Group 3672 Burke Rd. Pasadena, TX 77504 http://www.vectorcag.com	281-998-8012
VGas, LLC 12225 FM 529 Road Houston, TX 77070 http://www.vgasllc.com	713-896-8531
Vinson Process Controls 2747 Highpoint Oaks Drive Lewisville, TX 75067 http://www.vinsonprocess.com	972-459-8200
Virtual Materials Group Alastair Ross Technology Centre #300, 3553 - 31 Street NW Calgary, AB T2L 2K7 http://www.virtualmaterials.com	281-944-9902
VME Fabricators 3733 Shiloh Road Tyler, TX 75707 http://www.vmefabricators.com	903-561-4082
Wagner Power Systems 4000 Osuna Road NE Albuquerque, NM 87109 http://www.wagnerpower.com	505-345-8411
Wanzek Construction, Inc. 2028 2nd Ave. NW West Fargo, ND 58078 http://www.wanzek.com	701-282-6171

Company& Address	Phone
Wasson-ECE Instrumentation 101 Rome Ct. Ft. Collins, CO 80524 http://www.wasson-ece.com	970-221-9179
Welker 13839 West Bellfort St. Sugar Land, TX 77498 http://www.welker.com	281-491-2331
Wellsite Compressor & Equipment Co. 3600 Bent Cedar Trail Edmond, OK 73034 http://www.wellsitecompressor.com	405-282-8590
West Texas Compressor Specialist, LLC 1505 SW Mustang Dr. Andrews, TX 79714	432-741-9668
Western Filter Co., Inc. 10702 E. 11th Street Tulsa, OK 74128 http://www.westernfilterco.com	918-949-4455
Whitlow Professional Services 22164 MCH Rd., Ste. A Mandeville, LA 70471 http://www.w-epc.com	985-893-1100
Wier & Associates 701 Highlander Blvd., Ste. 300 Arlington, TX 76015 http://www.WierAssociates.com	817-467-7700
Wilson Mohr 12610 W Airport Blvd #100 Sugar Land, TX 77478 http://www.wilsonmohr.com	281-295-8850
WinSim Inc. 8653 FM 2759 Rd. Richmond, TX 77469 http://www.winsim.com	281-565-6700
Wood Group Mustang, Inc. 16001 Park Ten Place Houston, TX 77077 http://www.mustangeng.com	713-215-8000
Wood Group PSN 17000 Katy Frwy., Ste. 150 Houston, TX 77094	281-647-8413
Worley Parsons Resources & Energy 125 W. Huntington Dr. Arcadia, CA 91007 http://www.worleyparsons.com	626-294-3558
Woven Metal Products PO Box 1384 Alvin, TX 77512 http://www.wovenmetal.com	281-331-4466
Yokogawa Corp. of America 12530 W. Airport Blvd. Sugar Land, TX 77478 http://www.yokogawa.com/us	281-340-3900
York Process Systems 100 CV Avenue Waynesboro, PA 17268 http://www.johnsoncontrols.com	717-765-2510
Zachry 527 Logwood Ave. San Antonio, TX 78221 http://www.zachrygroup.com	210-588-6150

Company& Address	Phone
ZAP Engineering & Construction Services, Inc. 333 S. Allison Parkway, Ste. 100 Lakewood,, CO 80226 http://www.zapecs.com	303-565-5533
Zedi US 3001 N. Cameron Victoria, TX 77901 http://www.zedi.us	361-571-9408

Company& Address	Phone
Zeeco, Inc. 22151 East 91st St Broken Arrow, OK 74014 http://www.zeeco.com	918-258-8551
Zeochem 1600 West Hill St. Louisville, KY 40210 http://www.zeochem.com	502-693-0325

Classification of Members

Services

Gas Processors Suppliers Association

Sixty Sixty American Plaza, Suite 700

Tulsa, Oklahoma 74135

Phone: 918-493-3872

Fax: 918-493-3875

Email: gpsa@GPAglobal.org

<http://gpsa.GPAglobal.org>

The following is a listing of GPSA member companies classified by the type of services that they provide to the industry.

<p style="text-align: center;">COMPLIANCE — AUDITING</p> <p>C3 Resources, LLC CH2M Contek Solutions LLC Gulf Interstate Engineering H.J. Baker, PE Joule Processing, LLC. McAfee & Taft MEI, LLC Nalco, An Ecolab Company Parsons Corporation QuantityWare GmbH Rockwell Automation Select Engineering, Inc. Spitzer Industries SPL, Inc. STS Consulting Services Tetra Tech TRC Companies, Inc. Trinity Consultants Zedi US</p>	<p>CDM Resource Management LLC Conestoga-Rovers & Associates Federal Services LLC FESCO, Ltd. Gly-Tech Services Heath Consultants Incorporated Leidos Engineering Parsons Corporation SPL, Inc. TRC Companies, Inc.</p>
<p style="text-align: center;">COMPLIANCE — CRITICAL INCIDENT/ EMERGENCY RESPONSE</p> <p>Conestoga-Rovers & Associates Heath Consultants Incorporated Leidos Engineering QuantityWare GmbH Select Engineering, Inc. Tetra Tech USA Environment, L.P.</p>	<p style="text-align: center;">COMPLIANCE — ENVIRONMENTAL SERVICES</p> <p>A+ Corporation Anguil Environmental Systems BGE Catalytic Combustion Corporation Catalytic Products International, Inc. CDM Resource Management LLC CEI Engineering Associates CH2M Conestoga-Rovers & Associates Contek Solutions LLC Freese and Nichols, Inc. G2 Partners, LLC Geolex, Inc. Gly-Tech Services Hatch Mott MacDonald Leidos Engineering McAfee & Taft MIRATECH Corp. MSES Consultants, Inc. Nalco, An Ecolab Company Pantechs Laboratories, Inc. Parsons Corporation QPS Engineering Rockwell Automation SPL, Inc. STV/GWD</p>
<p style="text-align: center;">COMPLIANCE — EMISSIONS TESTING</p> <p>A+ Corporation Anguil Environmental Systems Catalytic Products International, Inc.</p>	

Tetra Tech
 TRC Companies, Inc.
 Trimeric Corp.
 Trinity Consultants
 United Steel Structures, Inc.
 USA Environment, L.P.
 Vapor Point
 Wood Group Mustang, Inc.

COMPLIANCE — LEAK DETECTION SERVICES

Conestoga-Rovers & Associates
 Contek Solutions LLC
 Energy Solutions International (ESI)
 GDS Corp.
 Heath Consultants Incorporated
 SPL, Inc.
 Thurmond-McGlothlin, Inc.
 Trinity Consultants

COMPLIANCE — LEGAL SERVICES

ENGlobal Corporation
 McAfee & Taft
 Robert R. Reis, Attorney-Mediator, P.C.
 SPL, Inc.

COMPLIANCE — SAFETY CONSULTANT

C3 Resources, LLC
 Conestoga-Rovers & Associates
 Contek Solutions LLC
 Elkhorn Holdings Inc
 Federal Services LLC
 G2 Partners, LLC
 Gly-Tech Services
 H.J. Baker, PE
 MEI, LLC
 MSES Consultants, Inc.
 Nalco, An Ecolab Company
 Parsons Corporation
 Select Engineering, Inc.
 Smith & Burgess
 STS Consulting Services
 The Arrington Corporation
 Toyo Engineering Corp.
 TRC Companies, Inc.
 Trimeric Corp.
 Wood Group Mustang, Inc.

COMPLIANCE — SECURITY

Cimation
 Leidos Engineering
 McAfee & Taft
 Parsons Corporation
 TRC Companies, Inc.

CONSULTING — COMPUTER SYSTEMS

Barry D. Payne & Associates, Inc.
 Cimation

Conestoga-Rovers & Associates
 Entero Corp.
 eSimulation, Inc.
 Federal Services LLC
 Leidos Engineering
 Puffer Sweiven
 QuantityWare GmbH
 Quorum Business Solutions, Inc.
 Select Engineering, Inc.
 Strategic Automation Services LLC
 Toyo Engineering Corp.
 Wilson Mohr
 Wood Group Mustang, Inc.
 Yokogawa Corp. of America

CONSULTING — EXPERT WITNESS

Coastal Flow Measurement, Inc.
 Conestoga-Rovers & Associates
 Geolex, Inc.
 Graves Analytical Services LLC
 Half TriTex
 J. H. Foglietta Consulting LLC
 Leidos Engineering
 Optimized Gas Treating, Inc.
 Parsons Corporation
 PetroSkills/John M. Campbell
 Robert R. Reis, Attorney-Mediator, P.C.
 Samuel Engineering, Inc.
 Select Engineering, Inc.
 SPL, Inc.
 The Arrington Corporation
 Thurmond-McGlothlin, Inc.
 TRC Companies, Inc.
 Trimeric Corp.
 Trinity Consultants
 Varo Engineers, Inc.

CONSULTING — FORENSIC ENGINEERING

Conestoga-Rovers & Associates
 PetroSkills/John M. Campbell
 The PROS Company
 Varo Engineers, Inc.

CONSULTING — CORROSION

Conestoga-Rovers & Associates
 Desert NDT, LLC
 Federal Services LLC
 Gly-Tech Services
 Gulf Coast Chemical, LLC
 Gulf Interstate Engineering
 Heath Consultants Incorporated
 International Oil & Gas Consultants Pte, Ltd.
 MSES Consultants, Inc.
 Nalco, An Ecolab Company
 PetroSkills/John M. Campbell
 Toyo Engineering Corp.
 Trimeric Corp.
 Troy Construction Co.

CONSULTING — STRATEGY PLANNING

BGE
 Conestoga-Rovers & Associates
 Contek Solutions LLC
 eSimulation, Inc.
 Foster Wheeler USA Corp.
 G2 Partners, LLC
 Geolex, Inc.
 Gulf Interstate Engineering
 Half TriTex
 J MAR & Associates
 J. H. Foglietta Consulting LLC
 Leidos Engineering
 LKS Midstream Consulting LLC
 MIRATECH Corp.
 Nalco, An Ecolab Company
 PetroSkills/John M. Campbell
 QPS Engineering
 QuantityWare GmbH
 RGW Solutions
 Shea Writing & Training Solutions, Inc.
 STS Consulting Services
 The Arrington Corporation
 TRC Companies, Inc.
 Yokogawa Corp. of America

DISMANTLE, SURPLUS EQUIPMENT

ARC Energy Equipment
 DanCar Energy Construction
 Dayton Lease & Pipeline Services, Inc.
 Elkhorn Holdings Inc
 Gas Technology Corp.
 Gly-Tech Services
 Gregory Gas Services LLC
 HETSCO, Inc.
 Moore Control Systems, Inc.
 Nicholas Consulting Group, Inc.
 Q.B. Johnson Manufacturing, Inc.
 Ref-Chem L.P.
 S-CON, Inc.
 Tetra Tech

ENGINEERING — PROCUREMENT AND CONSTRUCTION

AECOM
 Allied Equipment, Inc.
 AMCS Corp.
 Anvil Corporation
 Barry D. Payne & Associates, Inc.
 Bilfinger Westcon Inc.
 Bowden Construction Co. Ltd.
 Catamount Constructors
 CDM Resource Management LLC
 CH2M
 Cimation
 Conestoga-Rovers & Associates
 Cummings Electrical, Inc.

DanCar Energy Construction
 Dayton Lease & Pipeline Services, Inc.
 Devco USA
 EDG, Inc.
 Elkhorn Holdings Inc
 EMD, Inc.
 ENGlobal Corporation
 EPC, Inc.
 EXP Engineering International
 EXTERRAN
 Foster Wheeler USA Corp.
 Freese and Nichols, Inc.
 Grae-Con Construction, Inc.
 Gulf Interstate Engineering
 Halker Consulting LLC
 Hatch Mott MacDonald
 Hunt, Guillot & Associates
 Hytech Plant Design
 J.W. Williams an AECOM Company
 JGC Corporation
 Joule Processing, LLC.
 KBR
 KP Midstream
 Leidos Engineering
 Linde Process Plants, Inc.
 Master Corporation
 MEI, LLC
 MIRATECH Corp.
 MODEC International Inc.
 Moore Control Systems, Inc.
 Nicholas Consulting Group, Inc.
 NorthStar Energy Services, Inc.
 Optimized Process Designs
 Parsons Corporation
 Power & Control Engineering Solutions
 QPS Engineering
 Ref-Chem L.P.
 Regard Resources Co., Inc
 RGW Solutions
 Samuel Engineering, Inc.
 Saulsbury Industries, Inc.
 S-CON, Inc.
 SEC Energy Products & Services, LP
 Select Engineering, Inc.
 SNC-Lavalin E&C
 Spartan Energy Partners
 STS Consulting Services
 STV/GWD
 Sunland Construction Inc.
 TECHNIP
 Tetra Tech
 Toyo Engineering Corp.
 Trailhead Engineering
 TRC Companies, Inc.
 Troy Construction Co.
 UOP Russell
 Upstream Development and Engineering, Inc.
 Valdes Engineering Co.
 Valerus
 Varo Engineers, Inc.
 Vavco LLC

Wanzek Construction, Inc.
 Whitlow Professional Services
 Wilson Mohr
 Wood Group Mustang, Inc.
 Wood Group PSN
 Yokogawa Corp. of America

ENGINEERING — DRAFTING

AECOM
 Allied Equipment, Inc.
 Anvil Corporation
 CEI Engineering Associates
 CH2M
 Conestoga-Rovers & Associates
 Devco USA
 EDG, Inc.
 EMD, Inc.
 ENGlobal Corporation
 EPC, Inc.
 EXP Engineering International
 EXTERRAN
 Foster Wheeler USA Corp.
 Freese and Nichols, Inc.
 G2 Partners, LLC
 Gas Technology Corp.
 Gulf Interstate Engineering
 Half TriTex
 Halker Consulting LLC
 Hatch Mott MacDonald
 Hunt, Guillot & Associates
 Hytech Plant Design
 JGC Corporation
 Joule Processing, LLC.
 KP Midstream
 Leidos Engineering
 Linde Process Plants, Inc.
 Master Corporation
 MEI, LLC
 Moore Control Systems, Inc.
 MSES Consultants, Inc.
 Nicholas Consulting Group, Inc.
 NorthStar Energy Services, Inc.
 Optimized Process Designs
 Parsons Corporation
 Power & Control Engineering Solutions
 Q.B. Johnson Manufacturing, Inc.
 QPS Engineering
 Ref-Chem L.P.
 Samuel Engineering, Inc.
 Saulsbury Industries, Inc.
 S-CON, Inc.
 SEC Energy Products & Services, LP
 Select Engineering, Inc.
 Simms Machinery International
 SNC-Lavalin E&C
 Spartan Energy Partners
 STS Consulting Services
 STV/GWD
 Toyo Engineering Corp.
 Trailhead Engineering

TRC Companies, Inc.
 UOP Russell
 Upstream Development and Engineering, Inc.
 Valdes Engineering Co.
 Varo Engineers, Inc.
 Vavco LLC
 Whitlow Professional Services
 Wier & Associates
 Wood Group Mustang, Inc.
 ZAP Engineering & Construction Services, Inc.

ENGINEERING — PIPELINE

AECOM
 Bechtel
 CEI Engineering Associates
 CH2M
 Conestoga-Rovers & Associates
 Devco USA
 Elkhorn Holdings Inc
 EMD, Inc.
 Energy Solutions International (ESI)
 EXP Engineering International
 EXTERRAN
 Fabreeka International
 Foster Wheeler USA Corp.
 Freese and Nichols, Inc.
 G2 Partners, LLC
 Gulf Interstate Engineering
 Half TriTex
 Halker Consulting LLC
 Hatch Mott MacDonald
 Hunt, Guillot & Associates
 Hytech Plant Design
 JGC Corporation
 Joule Processing, LLC.
 KBR
 Master Corporation
 MEI, LLC
 MSES Consultants, Inc.
 Nalco, An Ecolab Company
 Nicholas Consulting Group, Inc.
 NorthStar Energy Services, Inc.
 Parsons Corporation
 QPS Engineering
 RGW Solutions
 Samuel Engineering, Inc.
 Select Engineering, Inc.
 SNC-Lavalin E&C
 Spartan Energy Partners
 STS Consulting Services
 STV/GWD
 Tetra Tech
 Toyo Engineering Corp.
 TRC Companies, Inc.
 Trimeric Corp.
 Valdes Engineering Co.
 Varo Engineers, Inc.
 Vavco LLC
 Whitlow Professional Services
 Wier & Associates

Wood Group Mustang, Inc.
ZAP Engineering & Construction Services, Inc.

ENGINEERING — PROCESS

AECOM
Allied Equipment, Inc.
AMCS Corp.
Anvil Corporation
Atlas Copco Gas and Process
Bechtel
CDM Resource Management LLC
CEI Engineering Associates
CH2M
Conestoga-Rovers & Associates
Devco USA
Dickson Process Systems, Ltd.
EDG, Inc.
EMD, Inc.
ENGlobal Corporation
EPC, Inc.
EXTERRAN
Foster Wheeler USA Corp.
Freese and Nichols, Inc.
G2 Partners, LLC
Gas Technology Corp.
GEA Refrigeration North America Inc.
Gly-Tech Services
Gulf Interstate Engineering
Half TriTex
Halker Consulting LLC
Hatch Mott MacDonald
Hunt, Guillot & Associates
Hytech Plant Design
International Oil & Gas Consultants Pte, Ltd.
J. H. Foglietta Consulting LLC
JGC Corporation
Johnson Matthey
Jonell, Inc
Joule Processing, LLC.
KBR
KP Midstream
KW International
Leidos Engineering
Linde Process Plants, Inc.
LKS Midstream Consulting LLC
M Chemical Company
Master Corporation
MEI, LLC
Moore Control Systems, Inc.
MSES Consultants, Inc.
Mueller Environmental Designs
Nalco, An Ecolab Company
Nexo Solutions
Nicholas Consulting Group, Inc.
NorthStar Energy Services, Inc.
Optimized Process Designs
Ortloff Engineers, Ltd.
Paratherm - Heat Transfer Fluids
Parsons Corporation
Prime Controls, LP

Q.B. Johnson Manufacturing, Inc.
QPS Engineering
Ref-Chem L.P.
Regard Resources Co., Inc
RGW Solutions
Rhine Ruhr Pty Ltd
River City Engineering
Rockwell Automation
Samuel Engineering, Inc.
Saulsbury Industries, Inc.
Schultz Process Services, Inc.
S-CON, Inc.
Select Engineering, Inc.
SNC-Lavalin E&C
Spartan Energy Partners
Strategic Automation Services LLC
STS Consulting Services
STV/GWD
Tetra Tech
The Arrington Corporation
Tomcej Engineering Inc.
Toyo Engineering Corp.
Trailhead Engineering
Trimeric Corp.
UOP Russell
Upstream Development and Engineering, Inc.
Valdes Engineering Co.
Varo Engineers, Inc.
Vavco LLC
Whitlow Professional Services
WinSim Inc.
Wood Group Mustang, Inc.
Wood Group PSN
Woven Metal Products
ZAP Engineering & Construction Services, Inc.
Zeochem

FACILITIES, EQUIPMENT

AECOM
Aeon PEC
Allied Equipment, Inc.
AMCS Corp.
ARC Energy Equipment
Cameron Valves and Measurement
CDM Resource Management LLC
CH2M
DanCar Energy Construction
Dayton Lease & Pipeline Services, Inc.
Dew Point Control, LLC
Dickson Process Systems, Ltd.
Elkhorn Holdings Inc
EMD, Inc.
EXTERRAN
Fabreka International
Foster Wheeler USA Corp.
Gas Equipment Co., Inc.
Gas Technology Corp.
GEA Refrigeration North America Inc.
Global Compressor, L.P.
Gregory Gas Services LLC

Halker Consulting LLC
 J.W. Williams an AECOM Company
 JGC Corporation
 Joule Processing, LLC.
 KP Midstream
 KW International
 Leidos Engineering
 Linde Process Plants, Inc.
 Masters Process Equipment
 Mueller Environmental Designs
 Nexo Solutions
 Niagara Blower
 Nicholas Consulting Group, Inc.
 Optimized Process Furnaces
 Parsons Corporation
 Peerless Mfg. Co.
 PFEC, Inc.
 Q.B. Johnson Manufacturing, Inc.
 Ref-Chem L.P.
 Regard Resources Co., Inc
 RGW Solutions
 River City Engineering
 Rotor-Tech, Inc.
 Samuel Engineering, Inc.
 Schultz Process Services, Inc.
 S-CON, Inc.
 SEC Energy Products & Services, LP
 Select Engineering, Inc.
 Sepra-Chem Corp.
 Smithco Engineering, Inc.
 SNC-Lavalin E&C
 Spartan Energy Partners
 Spitzer Industries
 SPL, Inc.
 STV/GWD
 Texas Turbine, Inc.
 The Arrington Corporation
 Thermal & Mechanical Equipment Co.
 Thurmond-McGlothlin, Inc.
 Toyo Engineering Corp.
 Trailhead Engineering
 Trimeric Corp.
 UOP Russell
 Upstream Development and Engineering, Inc.
 Valerus
 Varo Engineers, Inc.
 Wagner Power Systems
 Wanzek Construction, Inc.
 Welker

GAS COMPRESSION — LEASING

CDM Resource Management LLC
 CSI Compressco LP
 EXTERRAN
 Gas Technology Corp.
 J-W Power Company
 MODEC International Inc.
 SEC Energy Products & Services, LP
 Valerus

GAS COMPRESSION — REPAIR

Burckhardt Compression U.S.
 Cameron Valves and Measurement
 CDM Resource Management LLC
 CSI Compressco LP
 DanCar Energy Construction
 Elkhorn Holdings Inc
 Gas Technology Corp.
 GEA Refrigeration North America Inc.
 Global Compressor, L.P.
 J-W Power Company
 L.A. Turbine
 Moore Control Systems, Inc.
 Neuman & Esser USA, Inc.
 SEC Energy Products & Services, LP
 Simms Machinery International
 The PROS Company
 Valerus
 Wagner Power Systems
 Wanzek Construction, Inc.
 Wellsite Compressor & Equipment Co.

GAS COMPRESSION — SALES

Burckhardt Compression U.S.
 Cameron Valves and Measurement
 CSI Compressco LP
 EXTERRAN
 FES-Southwest, Inc.
 Gas Technology Corp.
 GEA Refrigeration North America Inc.
 Global Compressor, L.P.
 Guild Associates, Inc.
 International Oil & Gas Consultants Pte, Ltd.
 J-W Power Company
 L.A. Turbine
 Neuman & Esser USA, Inc.
 SEC Energy Products & Services, LP
 Spartan Energy Partners
 Valerus
 Vanco Equipment Co.
 Wellsite Compressor & Equipment Co.
 York Process Systems

INSPECTIONS, TESTING, ANALYSIS — GAS CONTAMINATION TESTING

A+ Corporation
 Conestoga-Rovers & Associates
 Gas Analytical Solutions, Inc.
 Intertek
 Nexo Solutions
 Nitro-Lift Technologies LLC
 Pantechs Laboratories, Inc.
 PECOFacet
 Scott Measurement Service Inc
 SPL, Inc.
 Wasson-ECE Instrumentation

INSPECTIONS, TESTING, ANALYSIS — GENERAL

A+ Corporation
 AECOM
 Burckhardt Compression U.S.
 Conestoga-Rovers & Associates
 DanCar Energy Construction
 Desert NDT, LLC
 Elkhorn Holdings Inc
 EXP Engineering International
 GEA Refrigeration North America Inc.
 Geolex, Inc.
 Gulf Interstate Engineering
 Heath Consultants Incorporated
 Hunt, Guillot & Associates
 Intertek
 Leidos Engineering
 McDaniel Technical Services Inc.
 Monico Monitoring, Inc.
 MSES Consultants, Inc.
 Nalco, An Ecolab Company
 Nexo Solutions
 Nitro-Lift Technologies LLC
 Pantechs Laboratories, Inc.
 Scott Measurement Service Inc
 Simms Machinery International
 SNC-Lavalin E&C
 SPL, Inc.
 STV/GWD
 Texas Turbine, Inc.
 Thurmond-McGlothlin, Inc.
 Wasson-ECE Instrumentation
 Zedi US
 Zeochem

INSPECTIONS, TESTING, ANALYSIS — PIPELINE

A+ Corporation
 CEI Engineering Associates
 Conestoga-Rovers & Associates
 DanCar Energy Construction
 Desert NDT, LLC
 Elkhorn Holdings Inc
 EXP Engineering International
 FESCO, Ltd.
 G2 Partners, LLC
 Gulf Interstate Engineering
 Hunt, Guillot & Associates
 McDaniel Technical Services Inc.
 MSES Consultants, Inc.
 Nalco, An Ecolab Company
 Nitro-Lift Technologies LLC
 SPL, Inc.
 STS Consulting Services
 STV/GWD
 Troy Construction Co.
 Zedi US

**OPERATION, MAINTENANCE, RELIABILITY —
ANALYTICAL LABORATORIES**

A+ Corporation
 Diablo Analytical, Inc.
 EXTERRAN
 FESCO, Ltd.
 Graves Analytical Services LLC
 Midway Laboratory, Inc.
 MSES Consultants, Inc.
 Nalco, An Ecolab Company
 Nexo Solutions
 Pantechs Laboratories, Inc.
 PetroSkills/John M. Campbell
 Scott Measurement Service Inc
 Shamrock Gas Analysis
 SPL, Inc.
 Thurmond-McGlothlin, Inc.
 Yokogawa Corp. of America
 Zedi US

**OPERATION, MAINTENANCE, RELIABILITY —
FAILURE ANALYSIS**

Burckhardt Compression U.S.
 Conestoga-Rovers & Associates
 Gas Technology Corp.
 J-W Power Company
 Monico Monitoring, Inc.
 MSES Consultants, Inc.
 Nalco, An Ecolab Company
 Neuman & Esser USA, Inc.
 PetroSkills/John M. Campbell
 RGW Solutions
 Samuel Engineering, Inc.
 Shrieve Chemical Products, Inc.
 Simms Machinery International
 SNC-Lavalin E&C
 Texas Turbine, Inc.
 The PROS Company
 Troy Construction Co.
 Whitlow Professional Services

**OPERATION, MAINTENANCE, RELIABILITY —
INSPECTIONS**

Aeon PEC
 Burckhardt Compression U.S.
 Conestoga-Rovers & Associates
 Desert NDT, LLC
 Eaton Metal Products Company, LLC
 HETSCO, Inc.
 Hunt, Guillot & Associates
 J-W Power Company
 KW International
 L.A. Turbine
 Nalco, An Ecolab Company
 Neuman & Esser USA, Inc.
 Nitro-Lift Technologies LLC
 PetroSkills/John M. Campbell

Ref-Chem L.P.
 Samuel Engineering, Inc.
 SNC-Lavalin E&C
 STS Consulting Services
 STV/GWD
 Troy Construction Co.
 Vavco LLC
 Whitlow Professional Services

**OPERATION, MAINTENANCE, RELIABILITY —
 INSULATION, PAINTING**

DanCar Energy Construction
 Dayton Lease & Pipeline Services, Inc.
 Elkhorn Holdings Inc
 Gas Technology Corp.
 Grae-Con Construction, Inc.
 Sunland Construction Inc.

**MAINTENANCE, RELIABILITY — MACHINING
 AND REPAIR**

Atlas Copco Gas and Process
 Best PumpWorks
 DanCar Energy Construction
 Elkhorn Holdings Inc
 Gas Technology Corp.
 HETSCO, Inc.
 J-W Power Company
 KW International
 Louisiana Valve Source, Inc.
 Neuman & Esser USA, Inc.
 Simms Machinery International
 SPL, Inc.
 Wagner Power Systems

**OPERATION, MAINTENANCE, RELIABILITY —
 MEASUREMENT**

A+ Corporation
 Analytical Systems International
 Cameron Valves and Measurement
 Coastal Flow Measurement, Inc.
 Diablo Analytical, Inc.
 Elkhorn Holdings Inc
 Graves Analytical Services LLC
 Heath Consultants Incorporated
 Louisiana Valve Source, Inc.
 Neuman & Esser USA, Inc.
 Omni Flow Computers, Inc.
 Samuel Engineering, Inc.
 Schneider Electric - Invensys
 SPL, Inc.
 STV/GWD
 Thurmond-McGlothlin, Inc.
 Welker

**OPERATION, MAINTENANCE, RELIABILITY —
 PERFORMANCE ANALYSIS**

AMCS Corp.
 EMD, Inc.
 eSimulation, Inc.
 Gas Technology Corp.
 Gly-Tech Services
 L.A. Turbine
 Monico Monitoring, Inc.
 Neuman & Esser USA, Inc.
 Nexo Solutions
 Ortloff Engineers, Ltd.
 Pantechs Laboratories, Inc.
 PetroSkills/John M. Campbell
 River City Engineering
 Samuel Engineering, Inc.
 Simms Machinery International
 SNC-Lavalin E&C
 STV/GWD
 Texas Turbine, Inc.
 Toyo Engineering Corp.
 Trimeric Corp.
 Vavco LLC
 Welker
 Whitlow Professional Services
 Wood Group Mustang, Inc.
 Yokogawa Corp. of America

**OPERATION, MAINTENANCE, RELIABILITY —
 SERVICES**

AECOM
 Aeon PEC
 Allied Equipment, Inc.
 Anguil Environmental Systems
 Atlas Copco Gas and Process
 Bechtel
 Bilfinger Westcon Inc.
 Burckhardt Compression U.S.
 Cameron Valves and Measurement
 Catalytic Products International, Inc.
 CH2M
 DanCar Energy Construction
 Dayton Lease & Pipeline Services, Inc.
 Elkhorn Holdings Inc
 E-MC Electrical
 EMD, Inc.
 eSimulation, Inc.
 Federal Services LLC
 Gas Technology Corp.
 Gly-Tech Services
 Grae-Con Construction, Inc.
 Graves Analytical Services LLC
 Gregory Gas Services LLC
 HETSCO, Inc.
 J-W Power Company
 Mid-States Supply
 Mueller Environmental Designs
 Nalco, An Ecolab Company

Neuman & Esser USA, Inc.
 Nexo Solutions
 Nitro-Lift Technologies LLC
 PetroSkills/John M. Campbell
 RGW Solutions
 Shamrock Gas Analysis
 Shea Writing & Training Solutions, Inc.
 Shrieve Chemical Products, Inc.
 SNC-Lavalin E&C
 Spartan Energy Partners
 STS Consulting Services
 STV/GWD
 Sunland Construction Inc.
 Tetra Tech
 The Arrington Corporation
 TriStar Global Energy Solutions
 USA Environment, L.P.
 Valdes Engineering Co.
 Valerus
 Vavco LLC
 Wanzek Construction, Inc.
 Welker
 Wood Group PSN

**PROCESS CONTROLS — INSTRUMENT AND
 ELECTRICAL CONSTRUCTION**

Allied Equipment, Inc.
 Analytical Systems International
 Anvil Corporation
 Barry D. Payne & Associates, Inc.
 Bechtel
 Bilfinger Westcon Inc.
 Buffalo Gap Instrumentation & Electrical
 Coastal Flow Measurement, Inc.
 Conestoga-Rovers & Associates
 Cummings Electrical, Inc.
 DanCar Energy Construction
 Elkhorn Holdings Inc
 E-MC Electrical
 EMD, Inc.
 ENGlobal Corporation
 Enovation Controls
 Fisher Controls
 Gas Technology Corp.
 GEA Refrigeration North America Inc.
 Half TriTex
 Halker Consulting LLC
 JGC Corporation
 LCM Industries, Inc.
 Leidos Engineering
 Linde Process Plants, Inc.
 Master Corporation
 MEI, LLC
 Moore Control Systems, Inc.
 MSES Consultants, Inc.
 Nicholas Consulting Group, Inc.
 NorthStar Energy Services, Inc.
 Optimized Process Designs
 Power & Control Engineering Solutions
 Prime Controls, LP

Rockwell Automation
 Samuel Engineering, Inc.
 Schneider Electric - Invensys
 Select Engineering, Inc.
 SPL, Inc.
 Strategic Automation Services LLC
 STV/GWD
 Sunland Construction Inc.
 Tetra Tech
 Trailhead Engineering
 UOP Russell
 Varo Engineers, Inc.
 Vavco LLC
 Vinson Process Controls
 Wilson Mohr
 Wood Group Mustang, Inc.
 Yokogawa Corp. of America

PROCESS CONTROLS — LICENSED PROCESSES

Allied Equipment, Inc.
 Barry D. Payne & Associates, Inc.
 Bechtel
 Conestoga-Rovers & Associates
 EMD, Inc.
 EXTERRAN
 GEA Refrigeration North America Inc.
 Leidos Engineering
 Prime Controls, LP
 Rockwell Automation
 STV/GWD
 Vinson Process Controls

TECHNOLOGY — LNG PROCESSES

AECOM
 AMCS Corp.
 Atlas Copco Gas and Process
 Bechtel
 Cameron Valves and Measurement
 Chart Energy & Chemicals
 EXTERRAN
 Foster Wheeler USA Corp.
 Guild Associates, Inc.
 International Oil & Gas Consultants Pte, Ltd.
 J. H. Foglietta Consulting LLC
 JGC Corporation
 KBR
 Linde Process Plants, Inc.
 MEI, LLC
 Moore Control Systems, Inc.
 Nalco, An Ecolab Company
 Nexo Solutions
 Ortloff Engineers, Ltd.
 Pennwell Corp.
 PetroSkills/John M. Campbell
 Q.B. Johnson Manufacturing, Inc.
 Rockwell Automation
 S-CON, Inc.
 Shea Writing & Training Solutions, Inc.
 Simms Machinery International

Toyo Engineering Corp.
Trailhead Engineering
Zeochem

TECHNOLOGY — NITROGEN REJECTION

AECOM
AMCS Corp.
Bechtel
Chart Energy & Chemicals
Guild Associates, Inc.
International Oil & Gas Consultants Pte, Ltd.
J. H. Foglietta Consulting LLC
Linde Process Plants, Inc.
Nitro-Lift Technologies LLC
Ortloff Engineers, Ltd.
Pennwell Corp.
Rockwell Automation
S-CON, Inc.
Toyo Engineering Corp.
UOP Russell
Zeochem

TECHNOLOGY — OFFGAS RECOVERY

AECOM
AMCS Corp.
Anguil Environmental Systems
Catalytic Products International, Inc.
Dickson Process Systems, Ltd.
Foster Wheeler USA Corp.
Gas Technology Corp.
GEA Refrigeration North America Inc.
Gly-Tech Services
Guild Associates, Inc.
International Oil & Gas Consultants Pte, Ltd.
J. H. Foglietta Consulting LLC
JGC Corporation
Linde Process Plants, Inc.
Moore Control Systems, Inc.
Ortloff Engineers, Ltd.
Pennwell Corp.
RGW Solutions
Rockwell Automation
Simms Machinery International
Toyo Engineering Corp.
Valerus
Vavco LLC
Zeochem

TRAINING, PUBLICATIONS — PIPELINE MAPS & DATA

COMPRESSORtech
G2 Partners, LLC
Pennwell Corp.
PetroSkills/John M. Campbell
SULPETRO INC.

TRAINING, PUBLICATIONS — PROCESS

Allied Equipment, Inc.
CEI Engineering Associates
COMPRESSORtech
Dickson Process Systems, Ltd.
ESD Simulation Training Inc.
eSimulation, Inc.
Federal Services LLC
Gly-Tech Services
Gulf Publishing Co.
J. H. Foglietta Consulting LLC
Nexo Solutions
Optimized Gas Treating, Inc.
Pennwell Corp.
PetroSkills/John M. Campbell
QuantityWare GmbH
River City Engineering
Shea Writing & Training Solutions, Inc.
SULPETRO INC.
The Arrington Corporation
Trimeric Corp.
Varo Engineers, Inc.
Vavco LLC

TREATING — GAS

AECOM
Allied Equipment, Inc.
Anguil Environmental Systems
Bartlett Equipment Co.
Catalytic Products International, Inc.
CDM Resource Management LLC
Dayton Lease & Pipeline Services, Inc.
Dickson Process Systems, Ltd.
Evonik Corp.
EXTERRAN
Foster Wheeler USA Corp.
Gas Technology Corp.
GEA Refrigeration North America Inc.
Gregory Gas Services LLC
Guild Associates, Inc.
Gulf Coast Chemical, LLC
HydroCat Industries
Industrial Distributors, Inc.
INEOS GAS/SPEC Technology Group
International Oil & Gas Consultants Pte, Ltd.
Johnson Matthey
Joule Processing, LLC.
KP Midstream
Leidos Engineering
Linde Process Plants, Inc.
M Chemical Company
MEI, LLC
Merichem
Nalco, An Ecolab Company
Nexo Solutions
Optimized Process Designs
PetroSkills/John M. Campbell

Q.B. Johnson Manufacturing, Inc.
 Q2 Technologies, LLC
 RGW Solutions
 Samuel Engineering, Inc.
 S-CON, Inc.
 Select Engineering, Inc.
 Sepra-Chem Corp.
 SNC-Lavalin E&C
 Spartan Energy Partners
 Spitzer Industries
 STS Consulting Services
 STV/GWD
 The Arrington Corporation
 Tomcej Engineering Inc.
 Trailhead Engineering
 Trimeric Corp.
 Troy Construction Co.
 Tryer Process Equipment
 UOP Russell
 Valerus
 Vapor Point
 Zeochem

Gregory Gas Services LLC
 Gulf Coast Chemical, LLC
 HydroCat Industries
 Industrial Distributors, Inc.
 INEOS GAS/SPEC Technology Group
 Johnson Matthey
 Joule Processing, LLC.
 KP Midstream
 Leidos Engineering
 Linde Process Plants, Inc.
 M Chemical Company
 Merichem
 Nalco, An Ecolab Company
 Nexo Solutions
 Optimized Process Designs
 Pentair Porous Media
 PetroSkills/John M. Campbell
 Q2 Technologies, LLC
 RGW Solutions
 Samuel Engineering, Inc.
 S-CON, Inc.
 Select Engineering, Inc.
 Sepra-Chem Corp.
 SNC-Lavalin E&C
 Spartan Energy Partners
 STS Consulting Services
 STV/GWD
 The Arrington Corporation
 Tomcej Engineering Inc.
 Trailhead Engineering
 Trimeric Corp.
 Troy Construction Co.
 UOP Russell
 Valerus
 Zeochem

TREATING — LIQUID

AECOM
 Allied Equipment, Inc.
 Anguil Environmental Systems
 Catalytic Products International, Inc.
 CDM Resource Management LLC
 Dayton Lease & Pipeline Services, Inc.
 Evonik Corp.
 EXTERRAN
 Foster Wheeler USA Corp.
 Gas Technology Corp.
 GEA Refrigeration North America Inc.
 Gly-Tech Services

Classification of Members

Supplies

Gas Processors Suppliers Association

Sixty Sixty American Plaza, Suite 700

Tulsa, Oklahoma 74135

Phone: 918-493-3872

Fax: 918-493-3875

Email: gpsa@GPAglobal.org

<http://gpsa.GPAglobal.org>

The following is a listing of GPSA member companies classified by the type of services that they provide to the industry.

<p style="text-align: center;">ADSORBENTS, CATALYSTS, MOLESIEVES</p> <p>Anguil Environmental Systems Catalytic Combustion Corporation Catalytic Products International, Inc. CECA Molecular Sieves/Arkema Inc. Chemical Products Industries, Inc. Coastal Chemical Co., LLC Evonik Corp. EXTERRAN Gly-Tech Services Gregory Gas Services LLC Guild Associates, Inc. Gulf Coast Chemical, LLC HydroCat Industries Industrial Distributors, Inc. Johnson Matthey M Chemical Company MIRATECH Corp. Mueller Environmental Designs Onsite Power Inc. Q.B. Johnson Manufacturing, Inc. Western Filter Co., Inc. Zeochem</p>	<p>MIRATECH Corp. Nalco, An Ecolab Company SpectraSensors Inc. SPL, Inc. Thurmond-McGlothlin, Inc. Wasson-ECE Instrumentation Welker Yokogawa Corp. of America</p>
<p style="text-align: center;">ANALYZERS, SAMPLING SYSTEMS</p> <p>A+ Corporation Analytical Systems International Bechtel Cameron Valves and Measurement ENGlobal Corporation FESCO, Ltd. GDS Corp. Gly-Tech Services Graves Analytical Services LLC Heath Consultants Incorporated Intertek JP3 Measurement Michell Instruments Inc.</p>	<p style="text-align: center;">AUTOMATION, INSTRUMENTS, PROCESS CONTROLS</p> <p>Aeon PEC Allied Equipment, Inc. Analytical Systems International Barry D. Payne & Associates, Inc. Bartlett Equipment Co. Bechtel Buffalo Gap Instrumentation & Electrical Catalytic Combustion Corporation Catalytic Products International, Inc. Cimation Coastal Flow Measurement, Inc. DanCar Energy Construction Diablo Analytical, Inc. E-MC Electrical EMD, Inc. Enovation Controls Federal Services LLC GDS Corp. Gregory Gas Services LLC KW International LCM Industries, Inc. Michell Instruments Inc. Mid-States Supply MIRATECH Corp. Monico Monitoring, Inc. Moore Control Systems, Inc. Nalco, An Ecolab Company Nicholas Consulting Group, Inc.</p>

Prime Controls, LP
 Puffer Sweiven
 Rexel Inc.
 Rockwell Automation
 Schneider Electric - Invensys
 SEC Energy Products & Services, LP
 Select Engineering, Inc.
 SPL, Inc.
 Strategic Automation Services LLC
 Texas Turbine, Inc.
 Thermal & Mechanical Equipment Co.
 Thurmond-McGlothlin, Inc.
 Vavco LLC
 Vinson Process Controls
 Wilson Mohr
 Yokogawa Corp. of America

BUILDINGS

Bechtel
 DanCar Energy Construction
 Elkhorn Holdings Inc
 ENGlobal Corporation
 Grae-Con Construction, Inc.
 Moore Control Systems, Inc.
 Sunland Construction Inc.
 Thurmond-McGlothlin, Inc.
 United Steel Structures, Inc.
 Wasson-ECE Instrumentation

CHEMICALS

Airgas, Inc.
 Bechtel
 Chemical Products Industries, Inc.
 Coastal Chemical Co., LLC
 Eastman Chemical
 Evonik Corp.
 Gly-Tech Services
 Gregory Gas Services LLC
 Gulf Coast Chemical, LLC
 INEOS GAS/SPEC Technology Group
 M Chemical Company
 Nalco, An Ecolab Company
 Nexo Solutions
 Paratherm - Heat Transfer Fluids
 Q2 Technologies, LLC
 Shrieve Chemical Products, Inc.
 TriStar Global Energy Solutions

COMPLIANCE (CONTINGENCY PLANS, EMISSION CONTROLS, SAFETY EQUIPMENT)

Anguil Environmental Systems
 Catalytic Combustion Corporation
 Catalytic Products International, Inc.
 Enovation Controls
 GDS Corp.
 Gly-Tech Services
 H.J. Baker, PE
 Heath Consultants Incorporated

MIRATECH Corp.
 Monico Monitoring, Inc.
 Onsite Power Inc.
 Peerless Mfg. Co.
 Robert R. Reis, Attorney-Mediator, P.C.
 Vapor Point
 Western Filter Co., Inc.

COMPRESSORS (AND PARTS)

Ariel Corporation
 Atlas Copco Gas and Process
 Bechtel
 Burckhardt Compression U.S.
 Cameron Valves and Measurement
 CDM Resource Management LLC
 CSI Compressco LP
 Everest Sciences
 Fabreka International
 FES-Southwest, Inc.
 Gas Equipment Co., Inc.
 GEA Refrigeration North America Inc.
 Global Compressor, L.P.
 Guild Associates, Inc.
 International Oil & Gas Consultants Pte, Ltd.
 J-W Power Company
 L.A. Turbine
 Monico Monitoring, Inc.
 Neuman & Esser USA, Inc.
 Nicholas Consulting Group, Inc.
 Rockwell Automation
 SEC Energy Products & Services, LP
 Simms Machinery International
 Sundyne Corporation
 Texas Turbine, Inc.
 The PROS Company
 Valerus
 Vanco Equipment Co.
 Wellsite Compressor & Equipment Co.
 Western Filter Co., Inc.
 York Process Systems

ELECTRIC MOTORS (AND SUPPLIES)

Bechtel
 Buffalo Gap Instrumentation & Electrical
 EMD, Inc.
 Gas Equipment Co., Inc.
 Mueller Environmental Designs
 Rexel Inc.
 Rotor-Tech, Inc.
 SEC Energy Products & Services, LP
 Wellsite Compressor & Equipment Co.

ENGINES (AND PARTS)

CSI Compressco LP
 Cummins Inc.
 Global Compressor, L.P.
 J-W Power Company
 Monico Monitoring, Inc.
 Mueller Environmental Designs

Valerus
Wagner Power Systems
Wellsite Compressor & Equipment Co.
Western Filter Co., Inc.

FILTERS

A+ Corporation
Aeon PEC
Bartlett Equipment Co.
Bechtel
Bilfinger Water Technologies
Everest Sciences
Fabwell Corp.
Filtration Technology Corp.
Gas Technology Corp.
GEA Refrigeration North America Inc.
Global Compressor, L.P.
Gly-Tech Services
Gregory Gas Services LLC
Industrial Distributors, Inc.
Jonell, Inc
KW International
MIRATECH Corp.
Mueller Environmental Designs
Nexo Solutions
PECOFacet
Pentair Porous Media
PSI (Process Solutions Integration)
Q.B. Johnson Manufacturing, Inc.
Rotor-Tech, Inc.
Royal Filter Mfg. Co., Inc.
Schultz Process Services, Inc.
SEC Energy Products & Services, LP
Septra-Chem Corp.
Thermal & Mechanical Equipment Co.
Welker
Western Filter Co., Inc.
Woven Metal Products

FIRED EQUIP (BOILERS, FLARES, HEATERS)

Aeon PEC
Anguil Environmental Systems
Bartlett Equipment Co.
Bechtel
Catalytic Combustion Corporation
Catalytic Products International, Inc.
Devco USA
Foster Wheeler USA Corp.
Gas Technology Corp.
Gly-Tech Services
Gregory Gas Services LLC
Half TriTex
International Oil & Gas Consultants Pte, Ltd.
John Zink Company LLC
KW International
Moore Control Systems, Inc.
Optimized Process Furnaces
PFEC, Inc.
Q.B. Johnson Manufacturing, Inc.

Spitzer Industries
Thermal & Mechanical Equipment Co.
Zeeco, Inc.

INDUSTRIAL AND SPECIALTY GASES

Accurate Gas Products L.L.C.
Air Liquide America Specialty Gases LLC
Airgas, Inc.
Burckhardt Compression U.S.
Gas and Supply
GDS Corp.
Red Ball Oxygen

MEMBRANES

A+ Corporation
Evonik Corp.
Guild Associates, Inc.
Industrial Distributors, Inc.
Nitro-Lift Technologies LLC

ODORIZATION, ODOR CONTROL

Anguil Environmental Systems
Catalytic Combustion Corporation
Catalytic Products International, Inc.
Heath Consultants Incorporated
HydroCat Industries
M Chemical Company
Mueller Environmental Designs
Nalco, An Ecolab Company
Peerless Mfg. Co.
TriStar Global Energy Solutions
Vapor Point
Welker

PACKAGED SYSTEMS

Aeon PEC
Allied Equipment, Inc.
Anguil Environmental Systems
Bechtel
Burckhardt Compression U.S.
Catalytic Combustion Corporation
Catalytic Products International, Inc.
CSI Compressco LP
Dayton Lease & Pipeline Services, Inc.
Devco USA
Dickson Process Systems, Ltd.
EPC, Inc.
EXTERRAN
Federal Services LLC
FES-Southwest, Inc.
Gas Technology Corp.
GDS Corp.
GEA Refrigeration North America Inc.
Gly-Tech Services
Guild Associates, Inc.
Heatec Inc.
Hunt, Guillot & Associates
Isotherm, Inc.

John Zink Company LLC
 Joule Processing, LLC.
 J-W Power Company
 Koch-Glitsch LP
 KP Midstream
 KW International
 Linde Process Plants, Inc.
 Louisiana Valve Source, Inc.
 MODEC International Inc.
 Moore Control Systems, Inc.
 Nexo Solutions
 Nicholas Consulting Group, Inc.
 Peerless Mfg. Co.
 Pentair Porous Media
 Q.B. Johnson Manufacturing, Inc.
 Regard Resources Co., Inc
 Schultz Process Services, Inc.
 S-CON, Inc.
 Spartan Energy Partners
 Spitzer Industries
 SPL, Inc.
 Texas Turbine, Inc.
 Thermal & Mechanical Equipment Co.
 Thurmond-McGlothlin, Inc.
 Tryer Process Equipment
 Valerus
 VME Fabricators
 Wagner Power Systems
 Welker
 Wellsite Compressor & Equipment Co.
 Whitlow Professional Services
 Wilson Mohr
 Yokogawa Corp. of America
 York Process Systems

PIPE, VALVES, FITTINGS, REGULATORS

A+ Corporation
 Accurate Gas Products L.L.C.
 Aeon PEC
 Airgas, Inc.
 ARC Energy Equipment
 Bartlett Equipment Co.
 Bechtel
 Cameron Valves and Measurement
 Chromatic Industries
 Enovation Controls
 Federal Services LLC
 FESCO, Ltd.
 Fisher Controls
 Gas Equipment Co., Inc.
 Gas Technology Corp.
 Gly-Tech Services
 Grae-Con Construction, Inc.
 Gregory Gas Services LLC
 Joule Processing, LLC.
 KW International
 LCM Industries, Inc.
 Louisiana Valve Source, Inc.
 Mid-States Supply
 PSI (Process Solutions Integration)

Scott Measurement Service Inc
 SPL, Inc.
 Thurmond-McGlothlin, Inc.
 Vinson Process Controls
 Welker

PIPELINE EQUIPMENT (INSTALLATION, PIGGING, REPAIR)

Allied Equipment, Inc.
 Bechtel
 Dayton Lease & Pipeline Services, Inc.
 Fabreeka International
 Select Engineering, Inc.
 Sunland Construction Inc.
 Thurmond-McGlothlin, Inc.
 Troy Construction Co.
 Wagner Power Systems
 Western Filter Co., Inc.

PROCESS EQUIPMENT — AIR COOLERS

Aeon PEC
 Bartlett Equipment Co.
 Bechtel
 CDM Resource Management LLC
 Chart Energy & Chemicals
 Everest Sciences
 EXTERRAN
 Fabsco Shell & Tube, LLC
 Gas Technology Corp.
 GEA Refrigeration North America Inc.
 Gly-Tech Services
 Gregory Gas Services LLC
 Joule Processing, LLC.
 Niagara Blower
 Onsite Power Inc.
 Ref-Chem L.P.
 Smithco Engineering, Inc.
 Spartan Energy Partners
 Thermal & Mechanical Equipment Co.
 Toyo Engineering Corp.

PROCESS EQUIPMENT — DEHYDRATION

Aeon PEC
 Allied Equipment, Inc.
 ARC Energy Equipment
 Bechtel
 Bilfinger Water Technologies
 CDM Resource Management LLC
 Dickson Process Systems, Ltd.
 EXTERRAN
 Fabwell Corp.
 Gas Technology Corp.
 GEA Refrigeration North America Inc.
 Gly-Tech Services
 Gregory Gas Services LLC
 Guild Associates, Inc.
 Heatec Inc.
 International Oil & Gas Consultants Pte, Ltd.

Isotherm, Inc.
 J.W. Williams an AECOM Company
 Joule Processing, LLC.
 Koch-Glitsch LP
 KP Midstream
 KW International
 Linde Process Plants, Inc.
 Louisiana Valve Source, Inc.
 Michell Instruments Inc.
 Nexo Solutions
 Nicholas Consulting Group, Inc.
 Norwood S&S, LLC
 PFEC, Inc.
 Q.B. Johnson Manufacturing, Inc.
 Ref-Chem L.P.
 Regard Resources Co., Inc
 Rhine Ruhr Pty Ltd
 Rotor-Tech, Inc.
 Schultz Process Services, Inc.
 SEC Energy Products & Services, LP
 Select Engineering, Inc.
 Spartan Energy Partners
 Spitzer Industries
 Toyo Engineering Corp.
 Tryer Process Equipment
 UOP Russell
 Valerus
 VME Fabricators
 Welker
 Woven Metal Products

PROCESS EQUIPMENT — MEASUREMENT

A+ Corporation
 Bechtel
 Cameron Valves and Measurement
 Chromatic Industries
 EMD, Inc.
 Federal Services LLC
 FESCO, Ltd.
 GDS Corp.
 GEA Refrigeration North America Inc.
 Gly-Tech Services
 Graves Analytical Services LLC
 Heath Consultants Incorporated
 J.W. Williams an AECOM Company
 JP3 Measurement
 L.A. Turbine
 Louisiana Valve Source, Inc.
 Moore Control Systems, Inc.
 Omni Flow Computers, Inc.
 PFEC, Inc.
 Schultz Process Services, Inc.
 Select Engineering, Inc.
 Spitzer Industries
 SPL, Inc.
 Thurmond-McGlothlin, Inc.
 Toyo Engineering Corp.
 VME Fabricators
 Wasson-ECE Instrumentation

Welker
 Wilson Mohr
 Zedi US

PROCESS EQUIPMENT — TURBOEXPANDERS

Atlas Copco Gas and Process
 Bartlett Equipment Co.
 Bechtel
 International Oil & Gas Consultants Pte,
 Ltd.
 Joule Processing, LLC.
 KP Midstream
 L.A. Turbine
 Simms Machinery International
 Texas Turbine, Inc.
 Toyo Engineering Corp.
 UOP Russell

PROCESS EQUIPMENT — VAPOR RECOVERY UNITS

Bechtel
 Burckhardt Compression U.S.
 Catalytic Combustion Corporation
 CDM Resource Management LLC
 Dew Point Control, LLC
 EPC, Inc.
 EXTERRAN
 Fabwell Corp.
 Gas Technology Corp.
 GEA Refrigeration North America Inc.
 Gly-Tech Services
 Gregory Gas Services LLC
 Guild Associates, Inc.
 Isotherm, Inc.
 J.W. Williams an AECOM Company
 John Zink Company LLC
 Joule Processing, LLC.
 KW International
 Louisiana Valve Source, Inc.
 Norwood S&S, LLC
 PFEC, Inc.
 Ref-Chem L.P.
 Select Engineering, Inc.
 Spartan Energy Partners
 Texas Turbine, Inc.
 Toyo Engineering Corp.
 Valerus
 Vapor Point
 Welker
 Wellsite Compressor & Equipment Co.
 Woven Metal Products
 Zeeco, Inc.
 Process Equipment - Vessels, Tanks
 Aeon PEC
 ARC Energy Equipment
 Bechtel
 Bilfinger Water Technologies
 CDM Resource Management LLC
 Devco USA

Dew Point Control, LLC
 Dickson Process Systems, Ltd.
 Eaton Metal Products Company, LLC
 Fabwell Corp.
 Filtration Technology Corp.
 Gas Technology Corp.
 GEA Refrigeration North America Inc.
 Gly-Tech Services
 Gregory Gas Services LLC
 Heatec Inc.
 HETSCO, Inc.
 Industrial Distributors, Inc.
 International Oil & Gas Consultants Pte, Ltd.
 Isotherm, Inc.
 J.W. Williams an AECOM Company
 Joule Processing, LLC.
 Koch-Glitsch LP
 KW International
 Louisiana Valve Source, Inc.
 Mueller Environmental Designs
 Nicholas Consulting Group, Inc.
 Nitro-Lift Technologies LLC
 Norwood S&S, LLC
 PECOFacet
 Peerless Mfg. Co.
 Pentair Porous Media
 PFEC, Inc.
 PSI (Process Solutions Integration)
 Q.B. Johnson Manufacturing, Inc.
 Regard Resources Co., Inc
 Rhine Ruhr Pty Ltd
 Schultz Process Services, Inc.
 SEC Energy Products & Services, LP
 Select Engineering, Inc.
 Spitzer Industries
 Toyo Engineering Corp.
 Trinity Containers, LLC
 Tryer Process Equipment
 Valerus
 Welker
 Western Filter Co., Inc.

PROCESS EQUIPMENT — WASTE HEAT RECOVERY

Aeon PEC
 Anguil Environmental Systems
 Atlas Copco Gas and Process
 Bartlett Equipment Co.
 Bechtel
 Catalytic Products International, Inc.
 Devco USA
 EXTERRAN
 Foster Wheeler USA Corp.
 Gas Technology Corp.
 GEA Refrigeration North America Inc.
 Gly-Tech Services
 Heatec Inc.
 International Oil & Gas Consultants Pte, Ltd.
 Isotherm, Inc.
 Joule Processing, LLC.
 Nalco, An Ecolab Company

Nicholas Consulting Group, Inc.
 Optimized Process Furnaces
 Spartan Energy Partners
 Texas Turbine, Inc.
 Thermal & Mechanical Equipment Co.
 Toyo Engineering Corp.
 Zeeco, Inc.

PROCESS EQUIPMENT — CRYOGENIC

Allied Equipment, Inc.
 ARC Energy Equipment
 Atlas Copco Gas and Process
 Bechtel
 Burckhardt Compression U.S.
 Chart Energy & Chemicals
 EPC, Inc.
 EXTERRAN
 Fabwell Corp.
 GEA Refrigeration North America Inc.
 Heatec Inc.
 HETSCO, Inc.
 International Oil & Gas Consultants Pte, Ltd.
 Isotherm, Inc.
 Joule Processing, LLC.
 Koch-Glitsch LP
 KP Midstream
 L.A. Turbine
 Linde Process Plants, Inc.
 Norwood S&S, LLC
 Q.B. Johnson Manufacturing, Inc.
 S-CON, Inc.
 Select Engineering, Inc.
 Simms Machinery International
 Spitzer Industries
 Texas Turbine, Inc.
 Thermal & Mechanical Equipment Co.
 UOP Russell
 Valerus
 VME Fabricators
 Woven Metal Products

PROCESS EQUIPMENT — EXCHANGERS

Aeon PEC
 Anguil Environmental Systems
 ARC Energy Equipment
 Atlas Copco Gas and Process
 AXH Air-Coolers
 Bartlett Equipment Co.
 Bechtel
 Catalytic Products International, Inc.
 Chart Energy & Chemicals
 Dew Point Control, LLC
 EXTERRAN
 Fabsco Shell & Tube, LLC
 Federal Services LLC
 FES-Southwest, Inc.
 Gas Technology Corp.
 GEA Refrigeration North America Inc.
 Gly-Tech Services

Gregory Gas Services LLC
 HETSCO, Inc.
 International Oil & Gas Consultants Pte, Ltd.
 Isotherm, Inc.
 J.W. Williams an AECOM Company
 Joule Processing, LLC.
 L.A. Turbine
 Masters Process Equipment
 Nicholas Consulting Group, Inc.
 Peerless Mfg. Co.
 Q.B. Johnson Manufacturing, Inc.
 Ref-Chem L.P.
 Regard Resources Co., Inc
 Spartan Energy Partners
 Thermal & Mechanical Equipment Co.
 Toyo Engineering Corp.
 York Process Systems

Federal Services LLC
 Gas Equipment Co., Inc.
 Gas Technology Corp.
 Gly-Tech Services
 Gregory Gas Services LLC
 International Oil & Gas Consultants Pte, Ltd.
 Joule Processing, LLC.
 Puffer Sweiven
 Rotor-Tech, Inc.
 Select Engineering, Inc.
 SERO Pump Systems, Inc.
 Sundyne Corporation
 Valerus
 Vanco Equipment Co.
 Wagner Power Systems
 Welker
 Western Filter Co., Inc.

PROCESS EQUIPMENT — LNG

ARC Energy Equipment
 Atlas Copco Gas and Process
 Bechtel
 Bilfinger Water Technologies
 Burckhardt Compression U.S.
 CDM Resource Management LLC
 EXTERRAN
 Fabwell Corp.
 GEA Refrigeration North America Inc.
 Guild Associates, Inc.
 International Oil & Gas Consultants Pte, Ltd.
 Isotherm, Inc.
 Koch-Glitsch LP
 KW International
 L.A. Turbine
 Linde Process Plants, Inc.
 MEI, LLC
 Norwood S&S, LLC
 Q.B. Johnson Manufacturing, Inc.
 Ref-Chem L.P.
 S-CON, Inc.
 Simms Machinery International
 Spartan Energy Partners
 Texas Turbine, Inc.
 Thermal & Mechanical Equipment Co.
 Toyo Engineering Corp.
 VME Fabricators
 Woven Metal Products
 Zeeco, Inc.

RECONDITIONED, SURPLUS EQUIPMENT

Aeon PEC
 ARC Energy Equipment
 Best PumpWorks
 Cameron Valves and Measurement
 Gas Technology Corp.
 Gly-Tech Services
 Gregory Gas Services LLC
 Joule Processing, LLC.
 KW International
 Louisiana Valve Source, Inc.
 Regard Resources Co., Inc
 SEC Energy Products & Services, LP
 Simms Machinery International
 Thurmond-McGlothlin, Inc.
 Vinson Process Controls
 Wellsite Compressor & Equipment Co.

SOFTWARE

Aspen Technology, Inc.
 Atlas Copco Gas and Process
 Bryan Research & Engineering, Inc.
 Cimation
 EMD, Inc.
 EMK3
 Energy Solutions International (ESI)
 ENGlobal Corporation
 Joule Processing, LLC.
 Monico Monitoring, Inc.
 Nexo Solutions
 Pantan Inc.
 Quorum Business Solutions, Inc.
 Rockwell Automation
 Virtual Materials Group
 Wasson-ECE Instrumentation
 WinSim Inc.

PUMPS

Atlas Copco Gas and Process
 Bartlett Equipment Co.
 Bechtel
 Best PumpWorks
 CSI Compressco LP

NOTES:
